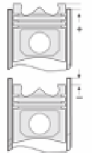
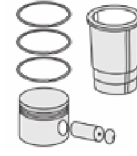
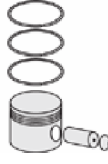
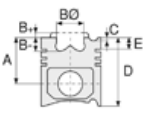




RENAULT - Ø 82,7

87-71948-STD



Motor Özellikleri
(Engine Specifications)

Piston Ölçüleri
(Piston Dimensions)

Piston Parça No
(Piston Part No)

Segman Seti
(Ring Set)

Silindir Gömleği
(Liner)

Silindir Kit
(Assembly Set)

Piston - Blok Montaj
Yüksekliği
(Piston - Block
Assembly Height)

İmalatçı (Manufacturer):
Renault
Çap (Diameter): 82,7
FM Grup No: 7257

A : 30.300
B - : 2.600
C1 : 1.600
C2 : 2.000
D : 56.800
E : 3.900

87-887800-22
87-71948-STD

87-887807-22
87-71948-050

06-887800-50-STD
06-887807-50 0,50 mm

1.200 NT ST
1.500 P GOE
2.000 CRP ST

F4R 780
4 Sil. Benzinli 1948cc 103
Kw (140 BG)
LAGUNA 2.0
1999 - 2001

Pim: 21 x 61



F4R 740/741/744
4 Sil. Benzinli 1998cc 103
Kw (140 BG)
MEGANE SCENIC 2.0 16v
1999 - 2003



F4R 712/713/787
4 Sil. Benzinli 1998cc 125
Kw (170 PS) 9.5:1
LAGUNA II 2.0 16v
2001....

Piston Özellikleri
(Piston Features)

Gözarası Konik
(Conical Eye Gap)

