



MAZDA - Ø 86

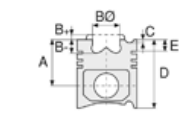
87-72423-STD



Motor Özellikleri
(Engine Specifications)

İmalatçı (Manufacturer):
MAZDA
Çap (Diameter): Ø 86
FM Grup No: 5703

RF
4 Sil. Dizel 2184cc
CREW CAP, E 2200 VAN,
PICK-UP



Piston Ölçüleri
(Piston Dimensions)

A : 43.310
B - : 1.500
D : 82.310
E : 9.700

Pim : 25 x 64



Piston Özellikleri
(Piston Features)

Segman Taşıyıcı
(Ring Carrier)
Çelik Plaka
(Steel Strut)
Soğutma Kanallı
(Cooling Gallery)
Yağ Püskürtme Oyuğu
(Oil Jet Cut-Out)
Gözarası Düz
(Flat Eye Gap)



Piston Parça No
(Piston Part No)

87-253300-22
87-72423-STD
87-253307-22
87-72423-050



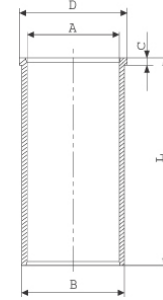
Segman Seti
(Ring Set)

06-253300-00-STD
06-253307-00-0,50 mm
2.000 CRP KV1
2.000 P STD
3.000 CRP STD



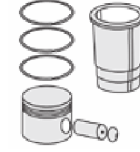
Silindir Gömleği
(Liner)

14-027100-00-D
B : 89.600
L : 165.000
D : 91.500
C : 5.000

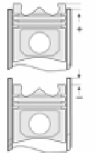


14-027101-00-D
B : 90.100
L : 165.000
D : 92.000
C : 5.000

Dış Çap 0,50mm Farklı
(Outside Diameter
0.50mm Different)



Silindir Kit
(Assembly Set)



Piston - Blok Montaj
Yüksekliği
(Piston - Block
Assembly Height)

+0,55 / +0,65

