



MERCEDES BENZ PKW - Ø 88

87-72532-STD



Motor Özellikleri
(Engine Specifications)

İmalatçı (Manufacturer):
MERCEDES BENZ PKW
Çap (Diameter): Ø 88
FM Grup No: 5866

OM646.961/951/962
/963/966

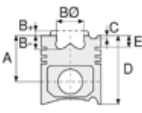
4 Sil. Dizel 2148cc 110
Kw(150 PS) 18:1
Turbo ,Intercool,
Common Rail
SPRINTER 213CDI,
SPRINTER 313CDI,
SPRINTER 413CDI,
VITO- VIANO CDI,
VITO C220 CDI W203,
VITO E220 CDI W211
2002 - 2006

OM647.961/981

5 Sil. Dizel 2685cc 130
Kw(177 PS) 18:1
Turbo ,Intercool,
Common Rail E270CDI
2002 - 2005

OM648.960/961

6 Sil. Dizel 3222cc 150
Kw(204 PS) 18:1
Turbo ,Intercool,
Common Rail
E320 CDI, S320 CDI
2002 - 2005



Piston Ölçüleri
(Piston Dimensions)

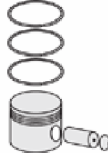
A : 42.300
B- : 14.100
BØ : 46.000
C1 : 1.780
C2 : 2.030
D : 72.300
E : 10.200

Pim : 30 x 70



Piston Özellikleri
(Piston Features)

Segman Taşıyıcı
(Ring Carrier)
Soğutma Kanallı
(Cooling Gallery)
Gözarası Konik
(Conical Eye Gap)



Piston Parça No
(Piston Part No)

87-877507-03
87-72532-0501
0,20 mm Kısa (Short)

87-877511-02
87-72532-100

87-877500-02
87-72532-STD

87-877507-02
87-72532-050

87-877500-03
87-72532-STD1
0,20 mm Kısa (Short)



Segman Seti
(Ring Set)

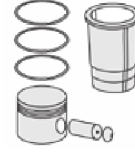
06-877500-00-STD
06-877507-00-0,50 mm
06-877511-00-1,00 mm

2.500  CKP KV4
2.000  CRP KV4
3.000  CRP GOE

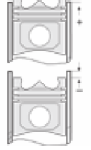
Goetze® LKZ-Ring®



Silindir Gömleği
(Liner)



Silindir Kit
(Assembly Set)



Piston - Blok Montaj
Yüksekliği
(Piston - Block
Assembly Height)

+0,38 / +0,62

