

**Motor Özellikleri**  
(Engine Specifications)

İmalatçı (Manufacturer):  
Jaguar-Peugeot-  
Land Rover  
Çap (Diameter): 81  
FM Grup No: 4909

**2.7 Lion TVM**

Dizel 2720cc 150 KW  
(204 PS)  
S Type 2.7D Twin Turbo

**2.7 Lion TVM**

Dizel 2720cc 150 Kw  
(204 PS)  
607 HDI  
2008....

**2.7 Lion TVM**

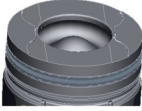
Dizel 2720cc 150 Kw  
(204 PS)  
DISCOVERY 2.7 TDI,  
RANGE ROVER 2.7 TDV6  
2008....

Jaguar, Peugeot ve  
Land Rover ile ortak motor  
(Common Engine With  
Jaguar, Peugeot And  
Land Rover)

**Piston Ölçüleri**  
(Piston Dimensions)

A : 47.000  
B- : 14.050  
BØ : 44.000  
C1 : 0.500  
D : 71.000  
E : 9.000

Pim: 29 x 62



**Piston Özellikleri**  
(Piston Features)

Segman Taşıyıcı  
(Ring Carrier)  
Soğutma Kanallı  
(Coolin Gallery)  
Yağ Püskürtme Oyuğu  
(Oil Jet Cut-out)  
Gözarası Konik  
(Conical Eye Gap)

**Piston Parça No**  
(Piston Part No)

87-839100-02  
87-72700-STD  
  
87-839107-02  
87-72700 0,50

**Segman Seti**  
(Ring Set)

06-839100-00-STD  
06-839107-00 0,50 mm  
  
2.000 CK KV1  
2.000 P GOE  
2.000 P F14

Yağ Segmanı Matkap Delik  
(Oil Ring Drill Perforated)

**Silindir Gömleği**  
(Liner)

**Silindir Kit**  
(Assembly Set)

**Piston - Blok Montaj**  
**Yüksekliği**  
(Piston - Block  
Assembly Height)

1,12 mm conta ile (With  
Notch) 0,54 /0,55

1,17 mm conta ile (With  
Notch) 0,55/0,60

1,22 mm conta ile (With  
Notch) 0,60/ 0,65

1,27 mm conta ile (With  
Notch) 0,65/0,70

1,32 mm conta ile (With  
Notch) 0,70/0,75

