



MAN - Ø 128

87-72950-STD A



Motor Özellikleri
(Engine Specifications)

İmalatçı (Manufacturer):
MAN
Çap (Diameter): Ø 128
FM Grup No: 5481

D 2866 LE 201
6 Sil. Dizel 11967cc
249/354 Kw(339/481 Ps)
Marin, Sabit Motor
(Marine, Stationary Engine)

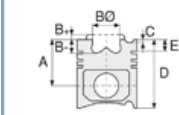
D 2866 LE 202
6 Sil. Dizel 11967cc
250/327 Kw(340/345 Ps)
Marin, Sabit Motor
(Marine, Stationary Engine)

D 2866 LE 203
6 Sil. Dizel 11967cc
327/364 Kw(445/495 Ps)
Marin, Sabit Motor
(Marine, Stationary Engine)

D 2866 LE 211
6 Sil. Dizel 11967cc
230/292 Kw(313/397 Ps)
Marin, Sabit Motor
(Marine, Stationary Engine)

D 2866 LE 401
6 Sil. Dizel 11967cc
441 Kw(600 Ps)
Marin, Sabit Motor
(Marine, Stationary Engine)

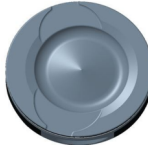
D 2866 LE 403
6 Sil. Dizel 11967cc
368 Kw(500 Ps)
Marin, Sabit Motor
(Marine, Stationary Engine)



Piston Ölçüleri
(Piston Dimensions)

A : 89.750
B - : 23.790
BØ : 81.100
BX : 2.100
C1 : 1.900
D : 141.750
E : 18.700

Pim: 46 x 105



Piston Özellikleri
(Piston Features)

Segman Taşıyıcı
(Ring Carrier)
Yağ Püskürtme Oyuğu
(Oil Jet Cut-out)
Burçlu Piston
(Bushing Piston)
Gözarası Konik
(Conical Eye Gap)



Piston Parça No
(Piston Part No)

87-124500-92
87-72950-STD A



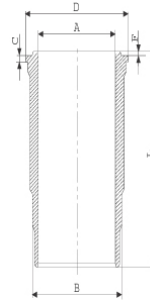
Segman Seti
(Ring Set)

06-124500-20-STD
4.000 CK KV4
3.000 GOE
4.000 CR GOE
Goetze® LKZ-Ring® /
Yağ Segmanı Matkap
Delikli (Oil Ring Drill
Perforated)



Silindir Gömleği
(Liner)

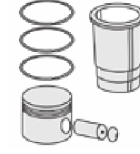
14-452920-00-WH
B : 144.500
L : 270.000
D : 153.800
C : 10.070
F : 1.000



O-RING Bilgi
(O-RING Information)
24-32448-70/O
2x 138*2,1 FPM
2x 144*4 FPM

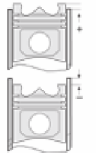
14-451260-00-WH
B : 144.500
L : 270.000
D : 153.800
C : 10.070
F : 1.000

Flanş / O-RING Altı
0,7 mm Artırılmış.
(Flange / O-RING Bottom
Increased by 0,7 mm.)



Silindir Kit
(Assembly Set)

89-124500-92-STD
89-72950 STD A



Piston - Blok Montaj
Yüksekliği
(Piston - Block
Assembly Height)

