



Motor Özellikleri
(Engine Specifications)

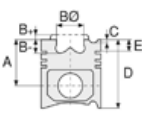
İmalatçı (Manufacturer):
PERKINS TRK
Çap (Diameter): Ø 105
FM Grup No: 7028

1103B/C-33T
EURO 2 (RG)

3 Sil. Dizel 3300cc
39-43Kw(53-58 Ps) 19,25:1
Doğal Emişli (Naturally Aspirated)
Erkunt TRK, LANDINI POWERFARM 60, MF266 G, MF3050, MF3060
2004....

1104C-44
EURO 2 (RG)

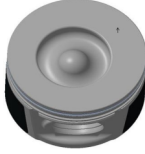
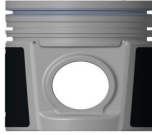
4 Sil. Dizel 4400cc
50-64 Kw (67-84 Ps) 19,3:1
Doğal emişli (Naturally Aspirated)
860 ELIT FERMEC, ÇUKUROVA 860SX, HIDROMEK 102/B, HIDROMEK 102/S, LANDINI POWERFARM 75/95/105, LCB 4 CX, SANKO MASTAŞ 444/E
2004....



Piston Ölçüleri
(Piston Dimensions)

A : 70.140
B- : 22.000
BØ : 55.100
BX : 2.500
BY : 1.500
D : 108.000
E : 8.000

Pim: 39,7 x 78



Piston Özellikleri
(Piston Features)

Segman Taşıyıcı
(Ring Carrier)
Gözarası Konik
(Conical Eye Gap)



Piston Parça No
(Piston Part No)

87-880807-13
87-73512-0501A
0,20 mm Kısa (Short)

87-880807-12
87-73512-050A

87-880811-13
87-73512-1001A
0,20 mm Kısa (Short)

87-880800-13
87-73512-STD1A
0,20 mm Kısa (Short)

87-880800-14
87-73512-STD2A
0,40 mm Kısa (Short)

87-880800-12
87-73512-STD A

87-880811-12
87-73512 100A



Segman Seti
(Ring Set)

06-880800-90-STD
06-880807-90 0,50 mm
06-880811-90 1,00 mm

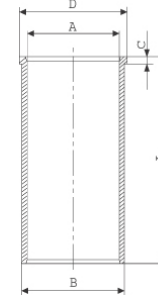
3.500 CKP KV1
2.500 P IKA
3.500 CRP STD



Silindir Gömleği
(Liner)

14-020870-00-D

B : 108.000
L : 127.000
D : 109.500
C : 5.000



14-020871-00-D

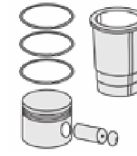
B : 108.500
L : 227.000
D : 110.000
C : 5.500

Dış Çap 0,50 mm Farklı
(Outer Diameter
0,50 mm Different)

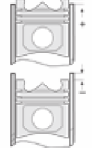
14-020872-00 D

B : 109.000
L : 227.000
D : 110.500
C : 6.000

Dış Çap 1,00 mm Farklı
(Outer Diameter
1,00 mm Different)



Silindir Kit
(Assembly Set)



Piston - Blok Montaj
Yüksekliği
(Piston - Block
Assembly Height)

+0,21 / +0,35

+0,36/+0,50

