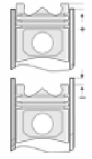
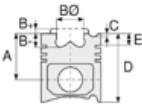




CASE - Ø 103

87-73515-STDA



Motor Özellikleri
(Engine Specifications)

İmalatçı (Manufacturer):
CASE
Çap (Diameter): Ø 103
FM Grup No: 1608

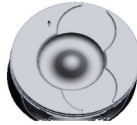
1004.42 EURO1

Dizel
Perkins İle Ortak Motor
(Common Engine With
Perkins)
AR81273 TRK
2001....

Piston Ölçüleri
(Piston Dimensions)

A : 70.300
B- : 22.000
BØ : 52.350
BX : 3.300
BY : 2.600
C1 : 1.100
C2 : 1.500
D : 108.230
E : 9.950

Pim: 39,7 x 74



Piston Özellikleri
(Piston Features)

Gözarası Konik
(Conical Eye Gap)

Piston Parça No
(Piston Part No)

87-893707-13
87-73515-0501A
0,20 mm Kısa (Short)

87-893700-13
87-73515-STD1A
0,20 mm Kısa (Short)

87-893700-12
87-73515-STDA

87-893707-12
87-73515 0,50

Segman Seti
(Ring Set)

06-893700-90-STD
06-893707-90 0,50 mm

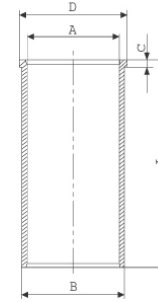
2.500 CKP KV1
2.500 P F14
3.500 CRP GOE

Goetze® LKZ-Ring®

Silindir Gömleği
(Liner)

14-020590-00-D

B : 107.050
L : 228.000
D : 110.050
C : 4.000



Silindir Kit
(Assembly Set)

Piston - Blok Montaj
Yüksekliği
(Piston - Block
Assembly Height)

1,70 mm Conta ile
(With Gasket)
+0,35/+0,55

