



CATERPILLAR - Ø 137,16

87-73590-STD



Motor Özellikleri
(Engine Specifications)

İmalatçı (Manufacturer):
CATERPILLAR
Çap (Diameter): Ø 137,16
FM Grup No : 1737

3406

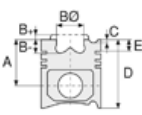
6 Sil. Dizel
Turbo intercool
980F, D8N

3408

8 Sil. Dizel
Turbo intercool
980F, D8L, D9L

3412

12 Sil. Dizel
Turbo intercool
988B, D9L



Piston Ölçüleri
(Piston Dimensions)

A : 88.060
B- : 17.800
B Ø: 94.100
D : 137.400
E : 21.500

Pim: 50,8 x 111,9



Piston Özellikleri
(Piston Features)

Çift Segman Taşıyıcı
(Double Ring Carrier)
Yağ Püskürtme Oyuğu
(Oil Jet Cut-out)
Göz Arası Konik
(Conical Eye Gap)



Piston Parça No
(Piston Part No)

87-824600-22
87-73590-STD



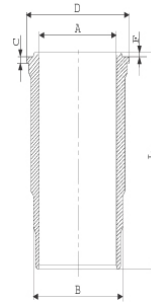
Segman Seti
(Ring Set)

06-824600-00-STD
3.960 CRP KV4
3.110 CRP KV1
3.115 CRP KV1

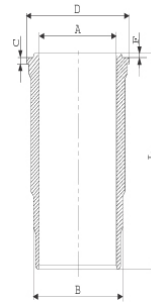


Silindir Gömleği
(Liner)

14-480030-00-WH
B : 153.750
L : 274.500
D : 165.200
C : 8.880
F : 1.000



14-480630-00-WH
B : 153.797
L : 273.300
D : 165.252
C : 8.915
F : 1.117

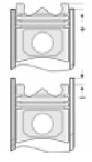


İndüksiyonlu
(Induction)



Silindir Kit
(Assembly Set)

88-824600-22-STD
88-73590-STD



Piston - Blok Montaj
Yüksekliği
(Piston - Block
Assembly Height)

-1,80 / -2,10

