



VOLKSWAGEN - Ø 85,5

06-394600-20-STD

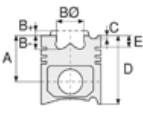


**Motor Özellikleri**  
(Engine Specifications)

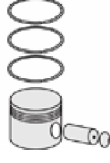
İmalatçı (Manufacturer):  
VOLKSWAGEN  
Çap (Diameter): Ø 85,5  
FM Grup No: 8627

211 / 311

4 Sil. Benzinli 1584cc  
32.5-37Kw (44-50 PS)  
7.5/7.7:1 Hava Soğutmalı  
Boxer Motor (Air Cooled  
Boxer Engine) 1200, 1302s,  
1303s, 1600, TYP 1/2/3,  
VARIANT 1600 A/L/TL  
1970 - 1979



**Piston Ölçüleri**  
(Piston Dimensions)



**Piston Parça No**  
(Piston Part No)



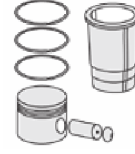
**Segman Seti**  
(Ring Set)

06-394600-20-STD  
06-394607-20-0,50 mm  
06-394611-20-1,00 mm

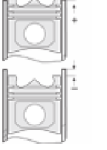
2.000 CRP IKA  
2.000 P STD  
5.000 P STD



**Silindir Gömleği**  
(Liner)



**Silindir Kit**  
(Assembly Set)



**Piston - Blok Montaj**  
Yüksekliği  
(Piston - Block  
Assembly Height)

