



VOLVO - Ø 130,18

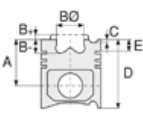
06-501300-80-STD



Motor Özellikleri
(Engine Specifications)

İmalatçı (Manufacturer):
VOLVO
Çap (Diameter): Ø 130,18
FM Grup No: 8830

TD123 E / ES
6 Sil. Dizel 12000cc
405 PS
Turbo Intercooled
F12-, NH12, NL12
1992 - 1994



Piston Ölçüleri
(Piston Dimensions)

Piston Özellikleri
(Piston Features)



Piston Parça No
(Piston Part No)



Segman Seti
(Ring Set)

06-501300-80-STD

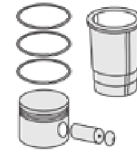
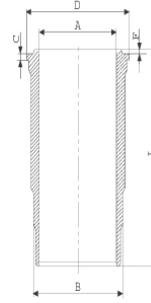
3.500  CK KV1
3.160  CR GOE
4.747  CR GOE



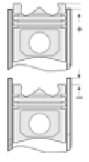
Silindir Gömleği
(Liner)

14-450310-00-WH

B : 143.900
L : 313.250
D : 157.620
C : 10.520
F : 3.280



Silindir Kit
(Assembly Set)



Piston - Blok Montaj
Yüksekliği
(Piston - Block
Assembly Height)

