



SUZUKI - Ø 62

06-960100-00-STD



Motor Özellikleri
(Engine Specifications)

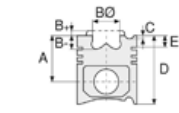
İmalatçı (Manufacturer):
SUZUKI
Çap (Diameter): Ø 62
FM Grup No: 8101

F5A

3 Sil. Benzinli 543cc 9,2:1
Alto 550 Van,
Carry 550 Kamyon,
Carry 550 Van,
Fronte SS40, SJ 410
1982 - 1985

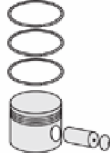
F8A

4 Sil. Benzinli 797cc 8,7:1
Carry, Gemini 800,
Jimny 800,
ST90 Kamyon
1978 - 1988



Piston Ölçüleri
(Piston Dimensions)

Piston Özellikleri
(Piston Features)



Piston Parça No
(Piston Part No)



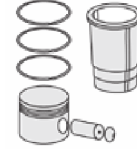
Segman Seti
(Ring Set)

06-960100-00-STD

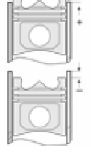
1.500 CRP IKA
1.500 P STD
2.800 P STD



Silindir Gömleği
(Liner)



Silindir Kit
(Assembly Set)



Piston - Blok Montaj
Yüksekliği
(Piston - Block
Assembly Height)

