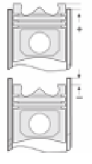
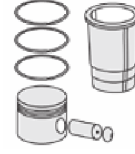
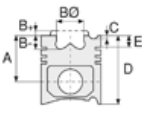




LAND ROVER - Ø 90,475

86-71412-STD



Motor Özellikleri
(Engine Specifications)

Piston Ölçüleri
(Piston Dimensions)

Piston Parça No
(Piston Part No)

Segman Seti
(Ring Set)

Silindir Gömleği
(Liner)

Silindir Kit
(Assembly Set)

Piston - Blok Montaj
Yüksekliği
(Piston - Block
Assembly Height)

İmalatçı (Manufacturer):
LAND ROVER
Çap (Diameter): Ø 90,475
FM Grup No: 4903

A : 54.560
B- : 3.630
D : 86.370
E : 16.080

86-71412-STD

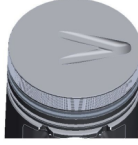
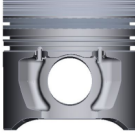
2.000
2.000
3.000

+0,10/+0,15

19 J

Pim: 30,162 x 74,6

4 Sil. Dizel 2495cc 21:1
Turbo, Endirekt Enjeksiyon
(Indirect Injection)
LAND ROVER 110,
LAND ROVER 90
1986 - 1990



Piston Özellikleri
(Piston Features)

Segman Taşıyıcı
(Ring Carrier)
Çelik Plaka
(Steel Strut)
Sert Anotlama
(Hard Anodizing)
Gözarası Düz
(Flat Eye Gap)

