



ISUZU - Ø 102

87-71236-STD



Motor Özellikleri
(Engine Specifications)

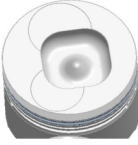
İmalatçı (Manufacturer):
ISUZU
Çap (Diameter): Ø 102
FM Grup No: 3908

4BD1
4 Sil. Dizel 3856cc
73 Kw (99 PS)
MD 275 LUK-HK
MIDIBUS, NKR-W
KAMYONET, NPR
595 KAMYON
1997....

Piston Ölçüleri
(Piston Dimensions)

A : 58.750
B - : 19.600
BØ : 50.900
BX : 5.000
BY : 1.000
C1 : 0.300
C2 : 0.350
D : 98.100
E : 16.000

Pim: 35 x 87,42



Piston Özellikleri
(Piston Features)

Segman Taşıyıcı
(Ring Carrier)
Çelik Plaka
Gözarası Konik
(Conical Eye Gap)

Piston Parça No
(Piston Part No)

87-246300-02
87-71236-STD
87-246300-03
87-71236-STD1
0,20 mm kısa (Short)

Segman Seti
(Ring Set)

06-246300-00-STD
3.000 P STD
2.500 P STD
5.000 P STD
Goetze® LKZ-Ring®

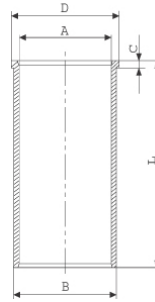
Silindir Gömleği
(Liner)

14-021470-10-DH
B : 105.030
L : 204.000
D : 111.940
C : 1.400



İçi Krom Kaplı,
Çelik Gömlek
(Inside Chrome Coated,
Steel Shirt)

14-027390-00-D
B : 106.000
L : 204.000
D : 112.000
C : 5.000



Silindir Kit
(Assembly Set)

Piston - Blok Montaj
Yüksekliği
(Piston - Block
Assembly Height)

0 / + 0,70

