



MAZDA-KIA - Ø 86

87-71338-STD



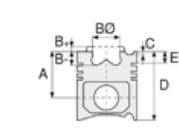
**Motor Özellikleri**  
(Engine Specifications)

İmalatçı (Manufacturer):  
MAZDA-KIA  
Çap (Diameter): Ø 86  
FM Grup No: 4601

R2

4 Sil. Dizel 2184cc 22, 9:1  
Mazda İle Ortak Motor  
(With Mazda Common  
Engine)  
BESTA YENİ TİP  
(New type)  
1993 - 1999

4 Sil. Dizel 2184cc 47 Kw  
(64 Ps) 23:1  
Kia ile ortak motor  
(With Kia Common  
Engine)  
CREW CAP,  
E 2200 VAN, PICK-UP  
1983...



**Piston Ölçüleri**  
(Piston Dimensions)

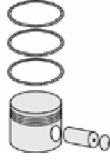
A : 47.350  
B- : 1.600  
D : 86.150  
E : 13.750

Pim : 25 x 68



**Piston Özellikleri**  
(Piston Features)

Segman Taşıyıcı  
(Ring Carrier)  
Çelik Plaka  
(Steel Strut)  
Soğutma Kanallı  
(Cooling Gallery)  
Gözarası Konik  
(Conical Eye Gap)



**Piston Parça No**  
(Piston Part No)

87-253300-02  
87-71338-STD  
87-253307-02  
87-71338-050



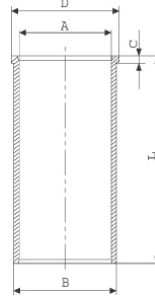
**Segman Seti**  
(Ring Set)

06-253300-00-STD  
06-253307-00-0,50 mm  
2.000 CRP KV1  
2.000 P STD  
3.000 CRP STD



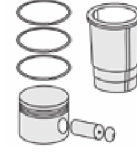
**Silindir Gömleği**  
(Liner)

14-027100-00-D  
B : 89.600  
L : 165.000  
D : 91.500  
C : 5.000

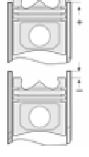


14-027101-00-D  
B : 90.100  
L : 165.000  
D : 92.000  
C : 5.000

Dış Çap 0,50mm Farklı  
(Outside Diameter  
0.50mm Different)



**Silindir Kit**  
(Assembly Set)



**Piston - Blok Montaj**  
Yüksekliği  
(Piston - Block  
Assembly Height)

Çelik Conta  
(Steel Gasket)  
+ 0,35 / + 0,55

Klingirit Conta  
(Klingirite Gasket)  
+ 0,35 / + 0,65

