



KIA - Ø 100

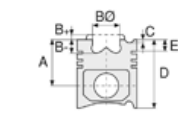
87-71342-STD



**Motor Özellikleri**  
(Engine Specifications)

İmalatçı (Manufacturer):  
KIA  
Çap (Diameter): Ø 100  
FM Grup No: 4607

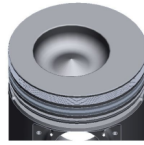
4 Sil. Dizel  
K 3500 KHVD 115 AO  
KAMYON, KOBRA



**Piston Ölçüleri**  
(Piston Dimensions)

A : 58.000  
B- : 17.200  
BØ : 55.000  
BX : 4.500  
BY : 1.550  
D : 105.000  
E : 16.000

Pim: 34 x 81,9



**Piston Özellikleri**  
(Piston Features)

Segman Taşıyıcı  
(Ring Carrier)  
Çelik Plaka  
(Steel Strut)  
Gözarası Konik  
(Conical Eye Gap)



**Piston Parça No**  
(Piston Part No)

87-253500-02  
87-71342-STD



**Segman Seti**  
(Ring Set)

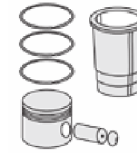
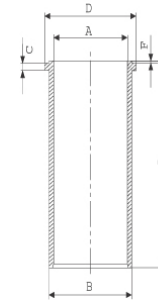
06-253500-00-STD

2.500 CRP KV1  
2.000 CRP STD  
4.500 CRP STD

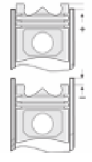


**Silindir Gömleği**  
(Liner)

14-048520-10-D  
B : 103.600  
L : 193.500  
D : 108.050  
C : 3.800  
F : 1.000



**Silindir Kit**  
(Assembly Set)



**Piston - Blok Montaj**  
Yüksekliği  
(Piston - Block  
Assembly Height)

0 / + 0,12

