



**Motor Özellikleri**  
(Engine Specifications)

İmalatçı (Manufacturer):  
VOLVO-KHD  
Çap (Diameter): Ø 108  
FM Grup No: 450111

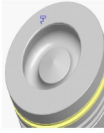
**TCD 2013 Euro3**  
**LO62V**  
6 Sil. Dizel 7146cc 184  
kW (250 HP) C. Rail R7

**TCD 2013 Euro3**  
**LO42V**  
4 Sil. Dizel 4764cc  
120-129 kw /163-175  
PS 18, 1:1

**Piston Ölçüleri**  
(Piston Dimensions)

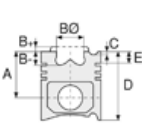
A : 71.150  
B : 19.600  
BØ : 64.000  
BX : 4.000  
BY : 2.000  
D : 108.000  
E : 14.040

Pim : 42 x 86



**Piston Özellikleri**  
(Piston Features)

Segman Taşıyıcı  
(Ring Carrier)  
Yağ Püskürtme Oyuğu  
(Oil Jet Cut-Out)  
Gözarası Konik  
(Conical Eye Gap)



**Piston Parça No**  
(Piston Part No)

87-136900-62  
87-71494-STD



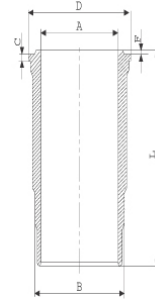
**Segman Seti**  
(Ring Set)

06-136900-00-STD  
3.000 CK KV1  
2.000 NTP KV1  
3.500 CRP STD  
Goetze® LKZ-Ring®

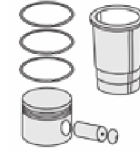


**Silindir Gömleği**  
(Liner)

14-480040-00-WH  
B : 118.000  
L : 229.100  
D : 128.500  
C : 9.000  
F : 1.100

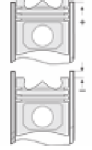


**O RİNG BİLGİ**  
(O Ring Information)  
24-35047-30/O  
2 X (112\*3) FKM  
PEROXIDE



**Silindir Kit**  
(Assembly Set)

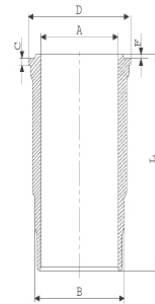
89-136900-62-STD  
89-71494-STD



**Piston - Blok Montaj**  
**Yüksekliği**  
(Piston - Block  
Assembly Height)

1,15 mm Conta ile  
(With Gasket)  
0,31/0,40  
1,25 mm Conta ile  
(With Gasket)  
0,41 / 0,50

14-480720-00-WH  
B : 120.000  
L : 229.100  
D : 128.500  
C : 9.000  
F : 1.100



**DIŞ YÜZEYİ FOSFAT**  
**KAPLI**  
(Outer Surface  
Phosphate Coated)

89-136900-72-STD  
89-71494-STD

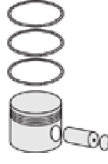




**Motor Özellikleri**  
(Engine Specifications)



**Piston Ölçüleri**  
(Piston Dimensions)



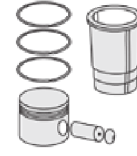
**Piston Parça No**  
(Piston Part No)



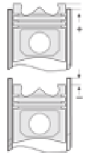
**Segman Seti**  
(Ring Set)



**Silindir Gömleği**  
(Liner)



**Silindir Kit**  
(Assembly Set)



**Piston - Blok Montaj**  
Yüksekliği  
(Piston - Block  
Assembly Height)

14-480040-00-WH  
O RİNG BİLGİ  
(O Ring Information)  
24-35047-30/O  
2 X (112\*3) FKM  
PEROXIDE

14-480041-00-WH  
B : 118.000  
L : 229.100  
D : 128.500  
C : 9.500  
F : 1.100

Flanş Kalınlığı ve  
Flanş alt boğaz çapı  
+0,50 mm farklı  
(Flange Thickness and  
Flange lower throat  
diameter+0.50mm  
different)

14-480042-00-WH  
B : 118.000  
L : 229.100  
D : 128.500  
C : 10.000  
F : 1.100

Flanş Kalınlığı ve  
Flanş alt boğaz çapı  
+1,00 farklı çalışması  
(Flange Thickness and  
Flange lower throat  
diameter+1.00mm  
different)

