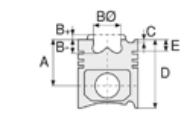




Motor Özellikleri
(Engine Specifications)

İmalatçı (Manufacturer):
VOLVO-MASSEY
FERGUSON
Çap (Diameter): Ø 98,48
FM Grup No: 5603

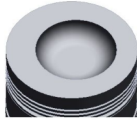
AD 4.236
4 Sil. Dizel 3846cc 43,5/59
Kw (59/80 PS) 16:1
SERIE MF 87/95/99/
175/177/187/
1965 - 1982



Piston Ölçüleri
(Piston Dimensions)

A : 70.680
B - : 20.710
BØ : 61.000
BX : 3.180
D : 121.480
E : 21.450

Pim : 34,925 x 84,1



Piston Özellikleri
(Piston Features)

Gözarası Düz
(Flat Eye Gap)



Piston Parça No
(Piston Part No)

87-315007-22
87-71736-050
87-315000-22
87-71736-STD
87-315000-23
87-71736-STD1
0,43 mm Kısa (Short)
87-315000-24
87-71736-STD2
0,20 mm Kısa (Short)



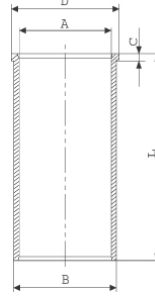
Segman Seti
(Ring Set)

06-315000-10-STD
06-315007-10-0,50 mm
2.385 CRP KV1
2.385 P STD
2.385 P STD
6.355 CRP STD
6.335 P STD



Silindir Gömleği
(Liner)

14-021980-00-D
B : 104.280
L : 226.440
D : 107.380
C : 3.800



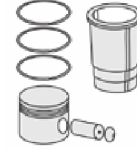
14-021981-00-D
B : 104.780
L : 226.440
D : 107.400
C : 4.000

Dış Çap 0,50 mm. farklı
(Outside Diameter
0.50mm Different)

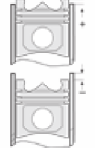
14-021982-00-D
B : 105.280
L : 226.440
D : 107.420
C : 4.250

Dış Çap 1,00 mm. farklı
(Outside Diameter
1.00mm Different)

14-045820-10-D
B : 103.330
L : 227.280
D : 106.420
C : 3.800
F : 0.900



Silindir Kit
(Assembly Set)



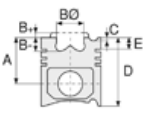
Piston - Blok Montaj
Yüksekliği
(Piston - Block
Assembly Height)

+0,38 / +0,53

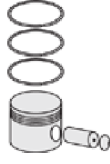




Motor Özellikleri
(Engine Specifications)



Piston Ölçüleri
(Piston Dimensions)



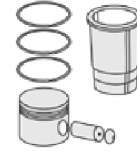
Piston Parça No
(Piston Part No)



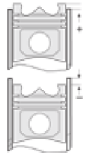
Segman Seti
(Ring Set)



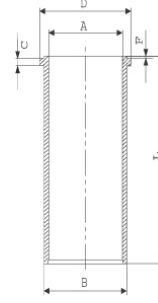
Silindir Gömleği
(Liner)



Silindir Kit
(Assembly Set)



Piston - Blok Montaj
Yüksekliği
(Piston - Block
Assembly Height)



14-045821-10-D
B : 103.830
L : 227.280
D : 106.920
C : 4.300
F : 0.900

Dış Çap 0,50 mm. farklı
(Outside Diameter
0.50mm Different)

14-045822-10-D
B : 104.330
L : 227.280
D : 107.420
C : 4.800
F : 0.900

Dış Çap 1,00 mm. farklı
(Outside Diameter
1.00mm Different)

14-045823-10-D
B : 104.830
L : 227.280
D : 107.920
C : 5.300
F : 0.900

