

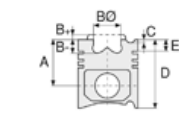


**Motor Özellikleri**  
(Engine Specifications)

İmalatçı (Manufacturer):  
VOLVO-RENAULT  
Çap (Diameter): Ø 81  
FM Grup No: 7218

**F 2 N.A700/E708**

4 Sil. Benzinli 1721cc  
59/60,5 Kw (80/82 PS)  
10:1 Volvo ile ortak motor  
(With Volvo Common  
Engine)  
FLASH R 11 GTX/TXE,  
R 21 ELECTRONIC,  
R 9 GTX/TXE  
1984 - 1989



**Piston Ölçüleri**  
(Piston Dimensions)

A : 44.050  
B - : 13.870  
BØ : 59.970  
D : 70.000  
E : 10.200

Pim : 21 x 65



**Piston Özellikleri**  
(Piston Features)

Çelik Plaka  
(Steel Strut)  
Biyel Koluna Sıkı Geçme  
(Close-Fit to Connecting Rod)  
Gözarası Düz  
(Flat Eye Gap)



**Piston Parça No**  
(Piston Part No)

87-335100-12  
87-71853-STD A  
87-335105-12  
87-71853-025A  
87-335107-12  
87-71853-050A



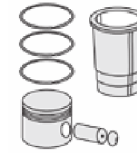
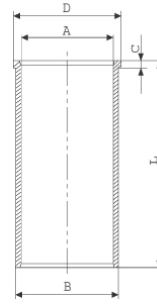
**Segman Seti**  
(Ring Set)

06-335100-90-STD  
06-335105-90-0,25 mm  
06-335107-90-0,50 mm  
1.750 CKP KV1  
2.000 P STD  
3.000 P STD

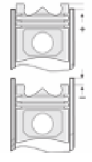


**Silindir Gömleği**  
(Liner)

14-029070-00-D  
B : 85.000  
L : 148.000  
D : 86.000  
C : 5.100



**Silindir Kit**  
(Assembly Set)



**Piston - Blok Montaj**  
Yüksekliği  
(Piston - Block  
Assembly Height)

