



STEYR - Ø 100

87-72031-STD



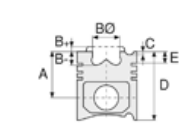
**Motor Özellikleri**  
(Engine Specifications)

İmalatçı (Manufacturer):  
STEYR  
Çap (Diameter): Ø 100  
FM Grup No: 7903

**WD 311**  
3 Sil. Dizel 2590cc  
40 / 41  
1982....

**WD 411**  
4 Sil. Dizel 3465cc  
41 / 42  
1982....

**WD 611**  
6 Sil. Dizel 5184cc  
87 / 88  
1982....



**Piston Ölçüleri**  
(Piston Dimensions)

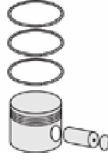
A : 58.400  
B- : 20.000  
BØ : 54.800  
BX : 5.000  
D : 98.900  
E : 17.000

Pim: 38 x 79



**Piston Özellikleri**  
(Piston Features)

Segman Taşıyıcı  
(Ring Carrier)  
Gözarası Düz  
(Flat Eye Gap)



**Piston Parça No**  
(Piston Part No)

87-362000-02  
87-72031-STD



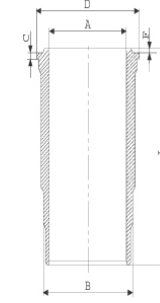
**Segman Seti**  
(Ring Set)

06-362000-10-STD  
2.500 CR KVI  
2.500 P STD  
4.000 CRP STD

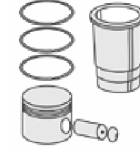


**Silindir Gömleği**  
(Liner)

14-450150-00-WH  
B : 109.400  
L : 197.000  
D : 118.000  
C : 9.000  
F : 1.100

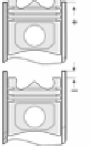


Dış Yüzeyi Krom Kaplı  
(Outer Surface  
Chrome Plated)



**Silindir Kit**  
(Assembly Set)

88-362000-02-STD  
88-72031-STD



**Piston - Blok Montaj**  
Yüksekliği  
(Piston - Block  
Assembly Height)

