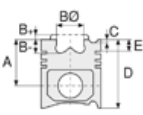
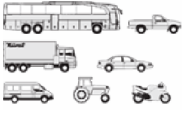




TOYOTA - Ø 92

87-72078-STD



Motor Özellikleri
(Engine Specifications)

İmalatçı (Manufacturer):
TOYOTA
Çap (Diameter): Ø 92
FM Grup No: 8203

2 L
4 Sil. Dizel 2445cc 79 PS
Hiace
1978 - 1995

Piston Ölçüleri
(Piston Dimensions)

A : 44.350
B - : 1.600
D : 80.350
E : 9.000

Pim: 27 x 70



Piston Özellikleri
(Piston Features)

Segman Taşıyıcı
(Ring Carrier)
Yağ Püskürtme Oyuğu
(Oil Jet Cut-out)
Gözarası Konik
(Conical Eye Gap)

Piston Parça No
(Piston Part No)

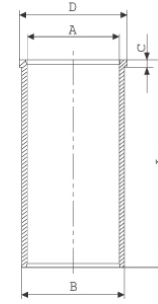
87-897000-02
87-72078-STD
87-897007-02
87-72078 050

Segman Seti
(Ring Set)

06-897000-00-STD
06-897007-00 0,50 mm
2.000 CRP KV1
2.000 CRP IKA
4.000 CRP STD

Silindir Gömleği
(Liner)

14-020310-00-D
B : 95.040
L : 155.000
D : 96.040
C : 5.000



Silindir Kit
(Assembly Set)

Piston - Blok Montaj
Yüksekliği
(Piston - Block
Assembly Height)

B Conta ile
(With B Gasket)
+0,68 / +0,77
D Conta ile
(With D Gasket)
+0,78 / +0,87
F Conta ile
(With F Gasket)
+0,87 / + 0,97

