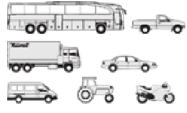




VOLVO - Ø 130,18

87-72235-STDC



Motor Özellikleri
(Engine Specifications)

İmalatçı (Manufacturer):
VOLVO

Çap (Diameter): Ø 130,18
FM Grup No: 8825

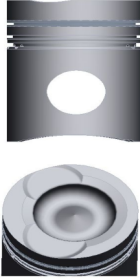
TD 122 F(USA) /FH/
FL/KHD

6 Sil. Dizel 12000cc
272 Kw(370 PS) 16:1
Turbo Intercooled
F 12
1987 - 1994

Piston Ölçüleri
(Piston Dimensions)

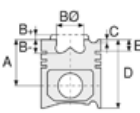
A : 114.200
B- : 24.120
BØ : 79.000
BX : 4.000
C1 : 2.600
D : 175.200
E : 27.800

Pim: 55 x 114



Piston Özellikleri
(Piston Features)

Segman Taşıyıcı
(Ring Carrier)
Gözarası Düz
(Flat Eye Gap)



Piston Parça No
(Piston Part No)

87-405600-12
87-72235-STDB



Segman Seti
(Ring Set)

06-405600-20-STD

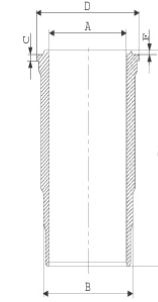
2.385 CR KV1
3.160 CR STD
4.747 CR STD

Goetze® LKZ-Ring®

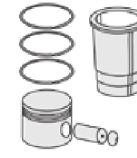


Silindir Gömleği
(Liner)

14-458180-00-WH
B : 143.880
L : 313.000
D : 157.620
C : 10.520
F : 3.280
R : 18.250

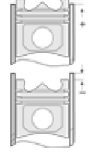


O-Ring Bilgi / Dış
Yüzeyi Fosfat Kaplı
(O-Ring Information /
Outer Surface
Phosphate Coated)
24-24468-02/O
1x 142,8*5,8 FPM
2x 142,8*5,8 EPDM
1x 141*2,4 FPM



Silindir Kit
(Assembly Set)

89-405600-12-STD
89-72235-STDB



Piston - Blok Montaj
Yüksekliği
(Piston - Block
Assembly Height)

..... / + 0,55

87-501700-22
87-72235-STDC

06-501700-80-STD

2.385 CK KV1
3.160 CR STD
4.747 CR STD

Goetze® LKZ-Ring®

89-501700-22-STD
89-72235-STDC

14-458180-00-WH
O-Ring Bilgi / Dış
Yüzeyi Fosfat Kaplı
(O-Ring Information /
Outer Surface
Phosphate Coated)
24-24468-02/O
1x 142,8*5,8 FPM
2x 142,8*5,8 EPDM
1x 141*2,4 FPM

14-458180-00-WH
O-Ring Bilgi / Dış
Yüzeyi Fosfat Kaplı
(O-Ring Information /
Outer Surface
Phosphate Coated)
24-24468-02/O
1x 142,8*5,8 FPM
2x 142,8*5,8 EPDM
1x 141*2,4 FPM

