



TATA - Ø 83

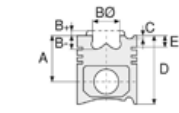
87-72250-STD



Motor Özellikleri
(Engine Specifications)

İmalatçı (Manufacturer):
TATA
Çap (Diameter): Ø 83
FM Grup No: 9302

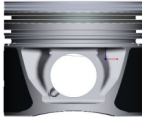
4DLT TDI
4 Sil. Dizel 1948cc 90
Ps 21:1
Turbo
PICKUP TELCOLINE



Piston Ölçüleri
(Piston Dimensions)

A : 47.000
B- : 3.200
D : 72.900
E : 9.100

Pim: 28 x 67



Piston Özellikleri
(Piston Features)

Segman Taşıyıcı
(Ring Carrier)
Yağ Püskürtme Oyuğu
(Oil Jet Cut-out)
Gözarası Konik
(Conical Eye Gap)



Piston Parça No
(Piston Part No)

87-859200-02
87-72250-STD



Segman Seti
(Ring Set)

06-859200-90-STD

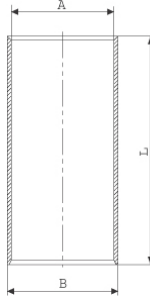
2.500 CKP KV1
2.000 P GOE
3.000 CRP STD



Silindir Gömleği
(Liner)

14-010720-00-D

B : 86.100
L : 149.500



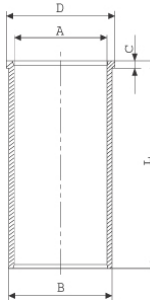
14-010721-00-D

B : 86.600
L : 149.500

Dış Çap 0,50 mm Farklı
(Outer Diameter
0,50 mm Different)

14-021060-00-D

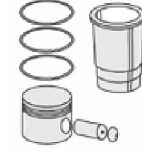
B : 86.100
L : 149.600
D : 87.500
C : 5.000



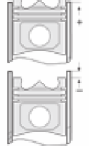
14-021061-00-D

B : 86.600
L : 149.600
D : 88.000
C : 5.500

Dış Çap 0,50 mm
Farklı Yarı Mamul
(Outer Diameter
0.50 mm Different
Semi-finished)



Silindir Kit
(Assembly Set)



Piston - Blok Montaj
Yüksekliği
(Piston - Block
Assembly Height)

- 1.Kertik Conta ile
(1.With Groove Gasket)
+0,45/+0,55
- 2.Kertik Conta ile
(2.With Groove Gasket)
+0,56/+0,65
- 3.Kertik Conta ile
(3.With Groove Gasket)
+0,66 /+0,75

