



VOLVO - Ø 98,42

87-73642-STD



Motor Özellikleri
(Engine Specifications)

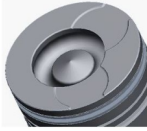
İmalatçı (Manufacturer):
VOLVO
Çap (Diameter): Ø 98,42
FM Grup No: 880172

TD 63 ES EURO 1
6 Sil. Dizel 5480cc
132-154 KW/179-209
PS 18, 3:1 FL611, FL612,
FL613, FL614, FL619
1991 - 1996

Piston Ölçüleri
(Piston Dimensions)

A : 79.400
B- : 20.400
BØ : 53.000
C1 : 0.775
D : 124.400
E : 10.000

Pim : 40 x 77,3



Piston Özellikleri
(Piston Features)

Segman Taşıyıcı
(Ring Carrier)
Gözarası Düz
(Flat Eye Gap)



Piston Parça No
(Piston Part No)

87-142500-22
87-73642-STD



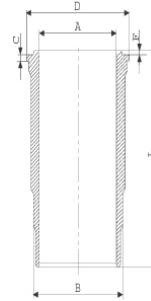
Segman Seti
(Ring Set)

06-142500-80-STD
3.500 CK KV1
2.500 F14
3.500 CR STD

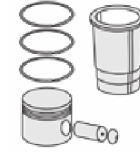


Silindir Gömleği
(Liner)

14-459340-00-WH
B : 109.928
L : 237.150
D : 111.577
C : 9.660
F : 3.590
R : 9.000

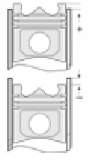


O-RİNG BİLGİ
(O-ring Information)
24-35043-41/O
1x 109*5,8 FPM LILA
2x 109*5,8 EPDM
1x 104*1,5 FPM



Silindir Kit
(Assembly Set)

89-142500-22-STD
89-73642-STD



Piston - Blok Montaj
Yüksekliği
(Piston - Block
Assembly Height)

