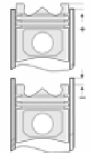
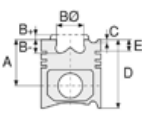




MAN - Ø 126

87-75566-STD



**Motor Özellikleri**  
(Engine Specifications)

İmalatçı (Manufacturer):  
MAN  
Çap (Diameter): Ø 126  
FM Grup No: 59014

**D2676 LF51**  
6 Sil. Dizel 12419cc  
368 Kw-500 PS  
NEOPLAN TGX EURO 6,  
TGA ÇEKİCİ  
2016...

**Piston Ölçüleri**  
(Piston Dimensions)

A : 71.300  
B- : 21.000  
BØ : 72.700  
C1 : 2.000  
D : 101.350  
E : 12.580

Pim: 52 x 82



**Piston Özellikleri**  
(Piston Features)

Soğutma Kanallı  
(Coolin Gallery)  
Gözarası Konik  
(Conical Eye Gap)

**Piston Parça No**  
(Piston Part No)

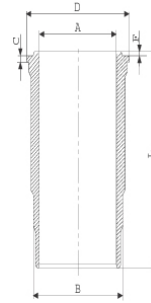
87-818300-22  
87-75566-STD  
Monosteel Çelik Piston  
(Monosteel Steel Piston)

**Segman Seti**  
(Ring Set)

06-818300-20-STD  
3.500 PVD ST  
2.500 ST  
3.500 NT ST

**Silindir Gömleği**  
(Liner)

14-451740-00-WH  
B : 139.500  
L : 257.500  
D : 150.000  
C : 8.070  
R : 11.200



Kurum Giderme Ringli  
(With Soot Removal  
Ring)

24-35043-60/O  
2x 139,5\*3,95\*4,70 FPM

**Silindir Kit**  
(Assembly Set)

89-818300-22-STD  
89-75566-STD

**Piston - Blok Montaj**  
Yüksekliği  
(Piston - Block  
Assembly Height)

