



VOLVO - Ø 111,12

06-125300-20-STD



Motor Özellikleri
(Engine Specifications)

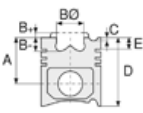
İmalatçı (Manufacturer):
VOLVO
Çap (Diameter): Ø 111,12
FM Grup No: 8816

D1113

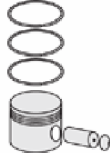
3 Sil. Dizel 3780cc 41
Kw (56 PS) 350 Trk
1977 - 1980

D1114

4 Sil. Dizel 5040cc 55
Kw (75 PS) 350 Trk,
470 Trk



Piston Ölçüleri
(Piston Dimensions)



Piston Parça No
(Piston Part No)



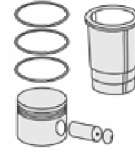
Segman Seti
(Ring Set)

06-125300-20-STD

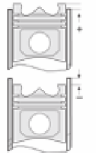
2.385		CR	STD
3.160		STD	STD
3.160		STD	STD
4.747		STD	STD
4.747		STD	STD



Silindir Gömleği
(Liner)



Silindir Kit
(Assembly Set)



Piston - Blok Montaj
Yüksekliği
(Piston - Block
Assembly Height)

