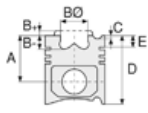




SAAB-SCANIA - Ø 127

06-348000-80-STD



Motor Özellikleri
(Engine Specifications)

Piston Ölçüleri
(Piston Dimensions)

Piston Parça No
(Piston Part No)

Segman Seti
(Ring Set)

Silindir Gömleği
(Liner)

Silindir Kit
(Assembly Set)

Piston - Blok Montaj
Yüksekliği
(Piston - Block
Assembly Height)

İmalatçı (Manufacturer):
SAAB-SCANIA
Çap (Diameter): Ø 127
FM Grup No: 7504

D11-O1 LB24/26
6 Sil. Dizel 11020cc 149
Kw (203 PS) 15:1
LB111, LBS111, LBT111
1977 - 1980

D11-O2 LB20/22
6 Sil. Dizel 11020cc 149
Kw (203 PS) 15:1
LB111, LBS111, LBT111
1977 - 1980

D11 LB18/20/22/24/26
6 Sil. Dizel 11020cc 149
Kw (203 PS) 15:1
LB111, LBS111, LBT111
1977 - 1980

DS11-O1 LB21/24
6 Sil. Dizel 11020cc
202,5/245 Kw
(280/333 PS) 16:1
Turbo
LB111, LBS111, LBT111,
T112E, T112H
1977 - 1980

DS11-O2 LB23/26
6 Sil. Dizel 11020cc
202,5/245 Kw
(280/333 PS) 16:1
Turbo
LB111, LBS111, LBT111,
T112E, T112H
1977 - 1980

DS11-11 LB01/2
6 Sil. Dizel 11020cc
202,5/245 Kw
(280/333 PS) 16:1
Turbo
K414, K414B, K420,
K424, K425, K425B,
K435, LB111, LBS111,
LBT111, T112E, T112H
1977 - 1980

Piston Özellikleri
(Piston Features)

06-348000-80-STD

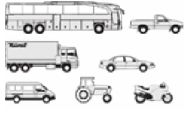
2.385  CK KV1
2.385  STD
2.385  STD
4.747  CR STD

Goetze® LKZ-Ring®



SAAB-SCANIA - Ø 127

06-348000-80-STD



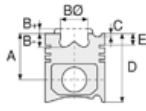
Motor Özellikleri
(Engine Specifications)

DS11-14 LO1/2/3
6 Sil. Dizel 11020cc
202,5/245 Kw
(280/333 PS) 16:1
Turbo
G112E, G112H, G112M,
K414, K414B, K420,
K424, K425, K425B,
K435, P112E, P112H,
P112M, R112E, R112H,
R112M, T112E, T112H
1981....

DS11-14 LO1/2/3
6 Sil. Dizel 11020cc
202,5/245 Kw
(280/333 PS) 16:1
Turbo
G112E, G112H, G112M,
K414, K414B, K420,
K424, K425, K425B,
K435, P112E, P112H,
P112M, R112E, R112H,
R112M, T112E, T112H
1981....

DS11-15 LO1/O2/O3
6 Sil. Dizel 11020cc
202,5/245 Kw
(280/333 PS) 16:1
Turbo
G112E, G112H, G112M,
K414, K414B, K420,
K424, K425, K425B,
K435, P112E, P112H,
P112M, R112E, R112H,
R112M, T112E, T112H
1981....

DS11-15 LO1/O2/O3
6 Sil. Dizel 11020cc
202,5/245 Kw
(280/333 PS) 16:1
Turbo
G112E, G112H, G112M,
K414, K414B, K420,
K424, K425, K425B,
K435, P112E, P112H,
P112M, R112E, R112H,
R112M, T112E, T112H
1981....



Piston Ölçüleri
(Piston Dimensions)



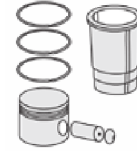
Piston Parça No
(Piston Part No)



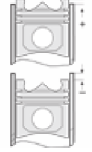
Segman Seti
(Ring Set)



Silindir Gömleği
(Liner)



Silindir Kit
(Assembly Set)

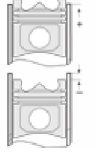
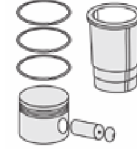
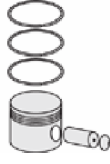
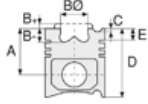


Piston - Blok Montaj
Yüksekliği
(Piston - Block
Assembly Height)



SAAB-SCANIA - Ø 127

06-348000-80-STD



Motor Özellikleri
(Engine Specifications)

Piston Ölçüleri
(Piston Dimensions)

Piston Parça No
(Piston Part No)

Segman Seti
(Ring Set)

Silindir Gömleği
(Liner)

Silindir Kit
(Assembly Set)

Piston - Blok Montaj
Yüksekliği
(Piston - Block
Assembly Height)

DS11-18 LO1/O2

6 Sil. Dizel 11020cc
202,5/245 Kw
(280/333 PS) 16:1
Turbo

G112E, G112H, G112M,
K414, K414B, K420,
K424, K425, K425B,
K435, P112E, P112H,
P112M, R112E, R112H,
R112M, T112E, T112H
1981....

DS11-18 LO1/O2

6 Sil. Dizel 11020cc
202,5/245 Kw
(280/333 PS) 16:1
Turbo

G112E, G112H, G112M,
K414, K414B, K420,
K424, K425, K425B,
K435, P112E, P112H,
P112M, R112E, R112H,
R112M, T112E, T112H
1981....

DS11 LB21

6 Sil. Dizel 11020cc
202,5/245 Kw
(280/333 PS) 15:1
Turbo

K414, K414B, K420,
K424, K425, K425B,
K435, LB111, LBS111, LBT111
1977 - 1980

DS11 LB23/24/26

6 Sil. Dizel 11020cc
202,5/245 Kw
(280/333 PS) 16:1
Turbo

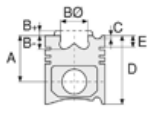
LB111, LBS111, LBT111,
T112E, T112H
1977 - 1980



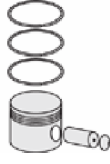


Motor Özellikleri
(Engine Specifications)

DSC11-01 L01/O2
6 Sil. Dizel 11020cc
202,5/245 Kw
(280/333 PS)
Turbocharged Intercooled
G112E, G112H, G112M,
K414, K414B, K420, K424,
K425, K425B, K435, P112E,
P112H, P112M, R112E, R112H,
R112M, T112E, T112H
1981....



Piston Ölçüleri
(Piston Dimensions)



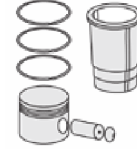
Piston Parça No
(Piston Part No)



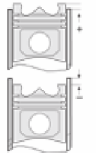
Segman Seti
(Ring Set)



Silindir Gömleği
(Liner)



Silindir Kit
(Assembly Set)



Piston - Blok Montaj
Yüksekliği
(Piston - Block
Assembly Height)

