

Motor Özellikleri
(Engine Specifications)

Piston Ölçüleri
(Piston Dimensions)

Piston Parça No
(Piston Part No)

Segman Seti
(Ring Set)

Silindir Gömleği
(Liner)

Silindir Kit
(Assembly Set)

Piston - Blok Montaj
Yüksekliği
(Piston - Block
Assembly Height)

İmalatçı (Manufacturer):
CATERPILLAR
Çap (Diameter): Ø 146,05
FM Grup No: 1711

A : 131.700
B- : 21.750
BØ : 128.000
C1 : 6.730
D : 207.980
E : 26.200
Pim: 60,706 x 120,3

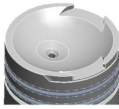
86-70337-STD

3.947
3.947
6.335

- 0,30 / - 0,50

D339
4 Sil. Dizel 13620cc 94Kw
(128PS) Motor nr: 34B1...
1954

D13000
6 Sil. Dizel
Motor nr. 1T1..1T478, Motor
nr. 28B1..28B504,
Motor nr. 29B1..29B41,
Motor nr. 30B1..30B69
1954



D342C
6 Sil. Dizel
Motor nr: 31B1..., Motor nr:
32B1..., Motor nr: 49B1...,
Motor nr: 50B1..., Motor
nr: 71B1...
1954....

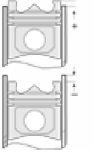
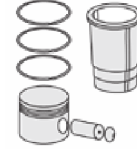
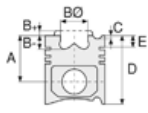
Piston Özellikleri
(Piston Features)

Segman Taşıyıcı
(Ring Carrier)
Soğutma Kanallı
(Coolin Gallery)
Yağ Püskürtme Oyuğu
(Oil Jet Cut-out)
Gözarası Konik
(Conical Eye Gap)

D342
6 Sil. Dizel 20400cc
136/235Kw (185-320PS)
15,7:1
Motor nr: 17S1..., Motor nr:
17V2854..., Motor nr: 31B1..
30B2477, Motor nr: 32B1..
32B1539, Motor nr: 50V1...
1954

D375D
8 Sil. Dizel
Motor nr: 43B1..., Motor nr:
43B1..44B650
1954

D364
8 Sil. Dizel 27250cc
175/357Kw
(238-486PS) 16:1
Motor nr. 19B1..19B335,
Motor nr. 20B1..20B102,
Motor nr. 21B1..21B368
1954....



Motor Özellikleri
(Engine Specifications)

Piston Ölçüleri
(Piston Dimensions)

Piston Parça No
(Piston Part No)

Segman Seti
(Ring Set)

Silindir Gömleği
(Liner)

Silindir Kit
(Assembly Set)

Piston - Blok Montaj
Yüksekliği
(Piston - Block
Assembly Height)

D375

8 Sil. Dizel 27250cc
175/357Kw (238-486PS)
16:1
Motor nr. 16B1..16B439,
Motor nr. 17B1..17B211,
Motor nr. 18B1..18B197
1954....

D397D

12 Sil. Dizel

Motor nr. 41B1..41B2498,
Motor nr. 42B1..42B458
1954....

D386

12 Sil. Dizel 40800cc
265/537Kw
16:1
Motor nr. 13B1..13B258,
Motor nr. 14B1..14B29,
Motor nr. 15B1..15B71
1954....

D397

12 Sil. Dizel

Motor nr. 10B1..10B725,
Motor nr. 11B1..11B175,
Motor nr. 12B1..12B399
1954....

