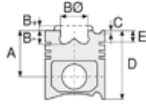




KOMATSU - Ø 95

86-71351-STD



**Motor Özellikleri**  
(Engine Specifications)

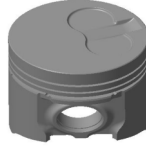
İmalatçı (Manufacturer):  
KOMATSU  
Çap (Diameter): Ø 95  
FM Grup No: 4701

**FD 30 NT 10**  
4 Sil. Dizel 40 Kw (54 PS)  
Endüstriyel (Industrial)

**Piston Ölçüleri**  
(Piston Dimensions)

A : 62.200  
B- : 1.800  
D : 104.100  
E : 13.800

Pim: 30 x 74



**Piston Özellikleri**  
(Piston Features)

Gözarası Konik  
(Conical Eye Gap)

**Piston Parça No**  
(Piston Part No)

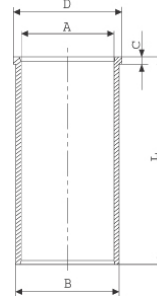
86-71351-STD

**Segman Seti**  
(Ring Set)

2.400  
2.000  
4.000

**Silindir Gömleği**  
(Liner)

14-020720-00-D  
B : 98.000  
L : 181.000  
D : 104.000  
C : 4.100



14-020721-00-D  
B : 98.500  
L : 181.000  
D : 104.000  
C : 4.100

Dış Çap 0,50 MM  
Farklı (Outer Diameter  
0,50 mm Different)

14-020722-00-D  
B : 99.000  
L : 187.500  
D : 100.100  
C : 6.000

Dış çap 1,00 mm Farklı  
(Outer Diameter  
1,00 mm Different)

14-021880-00-DH  
B : 98.000  
L : 180.000  
D : 104.000  
C : 4.000

**Silindir Kit**  
(Assembly Set)

**Piston - Blok Montaj**  
Yüksekliği  
(Piston - Block  
Assembly Height)

+ 0,55 / + 0,70



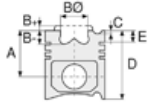


KOMATSU - Ø 95

86-71351-STD



**Motor Özellikleri**  
(Engine Specifications)



**Piston Ölçüleri**  
(Piston Dimensions)



**Piston Parça No**  
(Piston Part No)

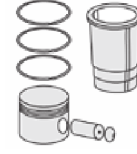
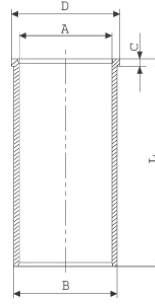


**Segman Seti**  
(Ring Set)

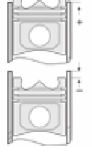


**Silindir Gömleği**  
(Liner)

14-028130-00-D  
B : 99.000  
L : 187.500  
D : 100.100  
C : 6.000



**Silindir Kit**  
(Assembly Set)



**Piston - Blok Montaj**  
**Yüksekliği**  
(Piston - Block  
Assembly Height)

