



Motor Özellikleri
(Engine Specifications)

İmalatçı (Manufacturer):
CATERPILLAR
Çap (Diameter): Ø 120,65
FM Grup No: 1705

D330 C
4 Sil. Dizel
Motor Nr. 4B1..4B4554,
Motor Nr. 5B1..5B1008

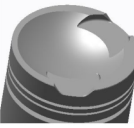
D333 C
4 Sil. Dizel
Motor Nr. 62U1..., Motor Nr.
66D1..., Motor Nr. 67D1...

3306
6 Sil. Dizel 10420cc
93/186Kw (126-252PS) 17:1
Crawler Dozer D7F, Grader
14D, Motor Nr. 3N1..., Motor
Nr. 44V1..., Motor Nr. 47V1...
Motor Nr. 49V1..., Motor Nr.
66D8891..., Motor Nr.
67D1103..., Motor Nr.
69D1...,
Motor Nr. 76R273...,
Pipe layer 571F, Pipe layer
572F, Wheel Loader Type
627, Wheel Loader Type
637, Wheel Loader Type
980B

Piston Ölçüleri
(Piston Dimensions)

A : 73.800
B - : 14.000
B : 101.000
BØ : 4.330
BY : 2.500
C1 : 6.700
D : 115.120
E : 20.300

Pim: 43,18 x 95,9



Piston Özellikleri
(Piston Features)

Yağ Püskürtme Oyuğu
(Oil Jet Cut-out)
Çift Segman Taşıyıcı
(Double Ring Carrier)
Gözarası Konik
(Conical Eye Gap)



Piston Parça No
(Piston Part No)

87-152200-02
87-70325-STD



Segman Seti
(Ring Set)

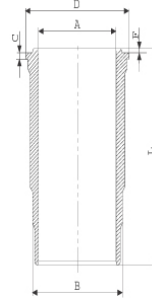
06-152200-10-STD

3.160 CRP KV1
2.385 CRP IKA
5.535 CRP IKA

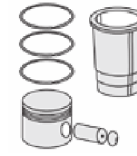


Silindir Gömleği
(Liner)

14-488320-00-WH
B : 137.500
L : 255.000
D : 146.000
C : 14.600
F : 1.000

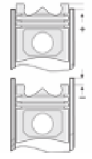


Dış Çap Yarı Mamül
(Outer Diameter
Semi-Finished)



Silindir Kit
(Assembly Set)

88-152200-12-STD
88-70325-STD

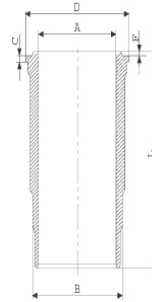


Piston - Blok Montaj
Yüksekliği
(Piston - Block
Assembly Height)

- 0,45 / + 0,06

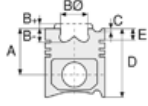
14-488330-00-WH
B : 134.350
L : 255.000
D : 143.000
C : 10.300
F : 1.000

88-152200-02-STD
88-70325-STD

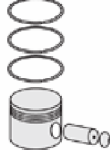




Motor Özellikleri
(Engine Specifications)



Piston Ölçüleri
(Piston Dimensions)



Piston Parça No
(Piston Part No)

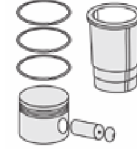


Segman Seti
(Ring Set)

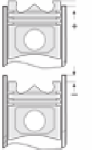


Silindir Gömleği
(Liner)

14-480180-00-WH
B: 134.450
L: 255.000
D: 144.750
C: 11.300
F: 1.000



Silindir Kit
(Assembly Set)



Piston - Blok Montaj
Yüksekliği
(Piston - Block
Assembly Height)

14-488620-00-WH
B: 134.450
L: 265.000
D: 144.750
C: 11.300
F: 1.000

