

Motor Özellikleri
(Engine Specifications)

İmalatçı (Manufacturer):
CATERPILLAR
Çap (Diameter): Ø 120,65
FM Grup No: 1706

3304

4 Sil. Dizel 7000cc
49/97Kw (62-130PS) 17:1
Loader 931, Loader 941,
Loader 950, Loader 951,
Skidder 518, Traktor D3,
Traktor D4, Traktor D5,
Wheeled Loader 910,
Wheeled Loader 955

3306

6 Sil. Dizel 10500cc
78/147Kw (106-200PS) 17:1
Grade 12, Pipelayer 561,
Pipelayer 571, Skidder 528,
Traktor 814, Traktor 816,
Traktor D5, Traktor D6,
Wheeled Loader 966
1966....

Piston Ölçüleri
(Piston Dimensions)

A : 73.990
B- : 14.300
B : 101.600
BØ : 4.500
BY : 2.540
C1 : 7.340
C2 : 6.760
D : 115.060
E : 19.850

Pim: 38,128 x 94,9



Piston Özellikleri
(Piston Features)

Yağ Püskürtme Oyuğu
(Oil Jet Cut-out)
Çift Segman Taşıyıcı
(Double Ring Carrier)
Gözarası Konik
(Conical Eye Gap)

Piston Parça No
(Piston Part No)

87-152200-32
87-70327-STD



Segman Seti
(Ring Set)

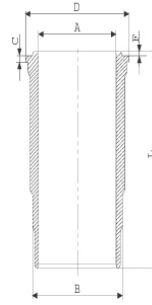
06-152200-10-STD

3.160 CRP KV1
2.385 CRP IKA
5.535 CRP IKA



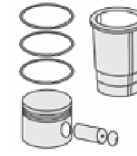
Silindir Gömleği
(Liner)

14-488330-00-WH
B : 134.350
L : 255.000
D : 143.000
C : 10.300
F : 1.000



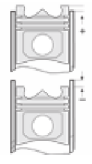
Silindir Kit
(Assembly Set)

88-152200-32-STD
88-70327-STD A

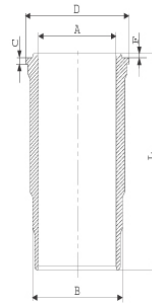


Piston - Blok Montaj
Yüksekliği
(Piston - Block
Assembly Height)

- 0,45 / + 0,06



14-488330-00-WH
B : 137.500
L : 255.000
D : 146.000
C : 14.600
F : 1.000



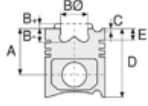
Dış Çap Yarı Mamül
(Outer Diameter
Semi-Finished)

88-152200-22-STD
88-70327-STD B

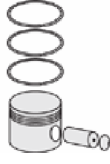




Motor Özellikleri
(Engine Specifications)



Piston Ölçüleri
(Piston Dimensions)



Piston Parça No
(Piston Part No)

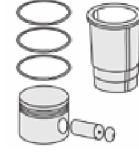


Segman Seti
(Ring Set)

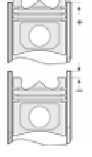


Silindir Gömleği
(Liner)

14-480180-00-WH
B: 134.450
L: 255.000
D: 144.750
C: 11.300
F: 1.000



Silindir Kit
(Assembly Set)



Piston - Blok Montaj
Yüksekliği
(Piston - Block
Assembly Height)

14-488620-00-WH
B: 134.450
L: 265.000
D: 144.750
C: 11.300
F: 1.000

