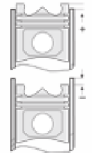
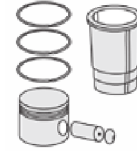
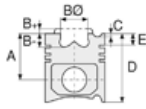




CUMMINS - Ø 102

87-70414-STD



Motor Özellikleri
(Engine Specifications)

İmalatçı (Manufacturer):
CUMMINS
Çap (Diameter): Ø 102
FM Grup No: 2104

4BTA 3,9
4 Sil. Dizel 3920cc
78 Kw (105PS)

Piston Ölçüleri
(Piston Dimensions)

A : 71.560
B- : 17.400
BØ : 63.870
BX : 3.600
D : 105.360
E : 14.360

Pim: 40 x 75,8



Piston Özellikleri
(Piston Features)

Segman Taşıyıcı
(Ring Carrier)
Göz Arası Konik
(Conical Between Eyes)

Piston Parça No
(Piston Part No)

87-155200-32
87-70414-STD
87-155207-62
87-70414 050

Segman Seti
(Ring Set)

06-155200-10-STD
06-155205-10 0,25 mm
06-155207-10 0,50 mm

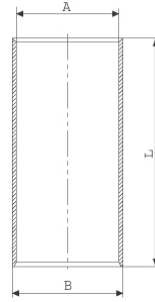
3.000 CRP KV1
2.350 P F14
4.000 CRP STD

Goetze® LKZ-Ring®

Silindir Gömleği
(Liner)

14-014530-00-D

B : 104.565
L : 200.000



14-014531-00-D

B : 105.065
L : 200.000

Dış Çap 0,50mm Farklı
(Outer Diameter
0,50 mm Different)

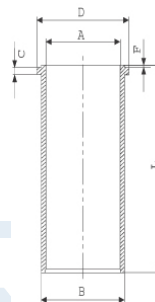
14-014532-00-D

B : 105.565
L : 200.000

Dış Çap 1,00mm Farklı
(Outer Diameter
1,00 mm Different)

14-047310-00-D

B : 106.070
L : 204.800
D : 109.000
C : 4.050
F : 0.800



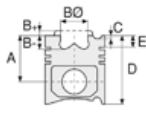
Piston - Blok Montaj
Yüksekliği
(Piston - Block
Assembly Height)

+ 0,33 / + 0,66





Motor Özellikleri
(Engine Specifications)



Piston Ölçüleri
(Piston Dimensions)



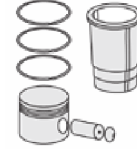
Piston Parça No
(Piston Part No)



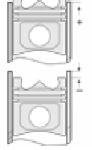
Segman Seti
(Ring Set)



Silindir Gömleği
(Liner)



Silindir Kit
(Assembly Set)



Piston - Blok Montaj
Yüksekliği
(Piston - Block
Assembly Height)

14-047311-00-D

B : 106.570
L : 204.800
D : 109.500
C : 5.050
F : 0.800

Dış Çap 0,50mm Farklı
(Outer Diameter
0,50 mm Different)

14-047312-00-D

B : 107.070
L : 204.800
D : 110.000
C : 5.050
F : 0.800

Dış Çap 1,00mm Farklı
(Outer Diameter
1,00 mm Different)

14-047313-00-D

B : 107.570
L : 204.800
D : 110.500
C : 5.500
F : 0.800

Dış Çap 1,50mm Farklı
(Outer Diameter
1,50 mm Different)

