



**Motor Özellikleri**  
(Engine Specifications)

İmalatçı (Manufacturer):  
MERCEDES BENZ LKW  
Çap (Diameter): Ø 128  
FM Grup No: 59033

**OM 421A.901/905/  
906/907/908/910**

6 Sil. Dizel 10965cc  
185-390 KW  
( 250 -530 PS ) 16.25:1  
V 6 TURBO  
1622, 1628, 2228,  
Endüstriyel (Industrial)  
1985....

**OM 421LA.901**

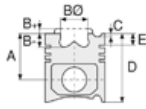
6 Sil. Dizel 10966cc 16.25:1  
V 6 TURBO  
INTERCOOLED  
Endüstriyel (Industrial)  
1979....

**OM 422A.901/951/  
952/954/956/957/  
958/963**

8 Sil. Dizel 14618cc  
184-390 ( 250-330 PS )  
16.25:1  
V 8 TURBO  
0303, 1633, 1933, 2033,  
2233, 2433, 2633, 2833,  
3033, 3333  
1979....

**OM 422LA.901/  
953/955/959**

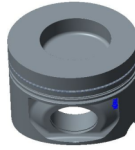
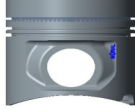
8 Sil. Dizel 14618cc  
184-390 ( 250-530 PS )  
16.25:1  
TURBO INTERCOOLER  
1638, 1938, 2238,  
2638, 3338  
1980....



**Piston Ölçüleri**  
(Piston Dimensions)

A : 81.300  
B- : 25.400  
BØ : 70.000  
BX : 3.000  
BY : 1.500  
D : 126.300  
E : 21.170

Pim: 46 x 99



**Piston Özellikleri**  
(Piston Features)

Segman Taşıyıcı  
(Ring Carrier)  
Yağ Püskürtme Oyuğu  
(Oil Jet Cut-out)  
Gözarası Düz  
(Flat Eye Gap)



**Piston Parça No**  
(Piston Part No)

87-70505-STD  
87-70505-STD



**Segman Seti**  
(Ring Set)

06-179300-20-STD

3.000 PS ST  
3.000 CR IKA  
4.000 CR STD

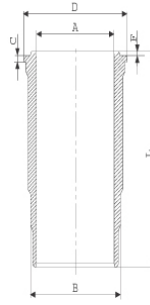
Goetze® LKZ-Ring®



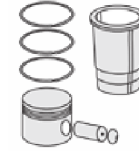
**Silindir Gömleği**  
(Liner)

14-452030-00-WH

B : 144.500  
L : 253.000  
D : 153.800  
C : 9.920  
F : 1.000

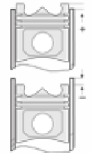


O-RİNG Bilgi  
(O-RING Information)  
24-26802-00/O  
2x 144\*3,8 FPM  
1x 140\*1,9 FPM  
1 ADET SHIM



**Silindir Kit**  
(Assembly Set)

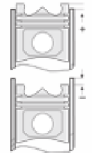
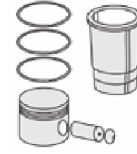
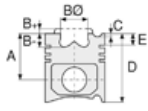
89-70505-STD-STD  
89-70505-STD



**Piston - Blok Montaj**  
Yüksekliği  
(Piston - Block  
Assembly Height)

+0,07 / +0,43





**Motor Özellikleri**  
(Engine Specifications)

**Piston Ölçüleri**  
(Piston Dimensions)

**Piston Parça No**  
(Piston Part No)

**Segman Seti**  
(Ring Set)

**Silindir Gömleği**  
(Liner)

**Silindir Kit**  
(Assembly Set)

**Piston - Blok Montaj**  
Yüksekliği  
(Piston - Block  
Assembly Height)

**OM 423A.901**  
10 Sil. Dizel 18273cc  
270-301Kw ( 367 PS )  
16.25:1  
V 10 TURBO  
Endüstriyel (Industrial)  
1966....

**OM 423LA**  
10 Sil. Dizel 18273cc  
368Kw ( 500 PS ) 16.25:1  
V 10 TURBO  
INTERCOOLER  
3250, 3850, 4050  
1979....

**OM 424A**  
12 Sil. Dizel 21927cc  
390-404 KW  
( 530-550 PS ) 16.25:1  
V 12 TURBO  
Endüstriyel (Industrial)  
1979....

**OM 424LA**  
12 Sil. Dizel 21927cc  
404-452Kw ( 549-614 PS )  
16.25:1  
V 12 TURBO  
INTERCOOLER  
Endüstriyel (Industrial)  
1979....

