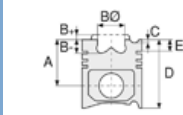


**Motor Özellikleri**  
(Engine Specifications)

İmalatçı (Manufacturer):  
IVECO LKW  
Çap (Diameter): Ø 104  
FM Grup No: 4013

**8040.45.400 Euro1**  
4 Sil.nDizel 3908cc 100  
Kw (136 PS) 17:1  
Turbo Intercooled  
120.14 KAMYON,  
85.14 KAMYON,  
E25.14 MIDIBUS,  
E29.14 MIDIBUS  
1996 - 2001



**Piston Ölçüleri**  
(Piston Dimensions)

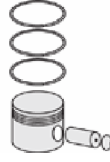
A : 65.330  
B- : 22.100  
BØ : 54.450  
BX : 3.500  
D : 104.330  
E : 21.730

Pim: 38 x 85



**Piston Özellikleri**  
(Piston Features)

Segman Taşıyıcı  
(Ring Carrier)  
Yağ Püskürtme Oyuğu  
(Oil Spray Groove)  
Gözarası Konik  
(Conical Eye Gap)



**Piston Parça No**  
(Piston Part No)

87-854400-13  
87-70778-STDA1  
- 0,20 mm Kısa (Short)  
87-854400-12  
87-70778-STDA



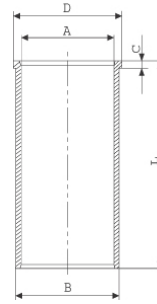
**Segman Seti**  
(Ring Set)

06-854400-90-STD  
3.000 CKP KV1  
2.500 P IKA  
4.000 CRP STD  
Goetze® LKZ-Ring®



**Silindir Gömleği**  
(Liner)

14-020440-00-D  
B : 107.000  
L : 198.000  
D : 110.500  
C : 6.500



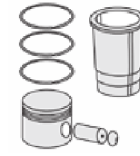
14-020441-00-D  
B : 107.200  
L : 198.000  
D : 110.500  
C : 6.500

Dış Çap 0,20 mm Farklı  
(Outside Diameter  
0,20 mm Different)

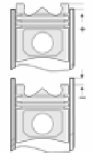
14-020442-00-D  
B : 107.500  
L : 198.000  
D : 111.000  
C : 6.500

Dış Çap 0,50 mm Farklı  
(Outside Diameter  
0,50 mm Different)

14-028640-00-D  
B : 106.970  
L : 198.000  
D : 109.900  
C : 5.000



**Silindir Kit**  
(Assembly Set)



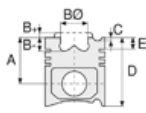
**Piston - Blok Montaj**  
Yüksekliği  
(Piston - Block  
Assembly Height)

+ 0,53 / + 0,72





**Motor Özellikleri**  
(Engine Specifications)



**Piston Ölçüleri**  
(Piston Dimensions)



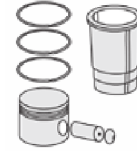
**Piston Parça No**  
(Piston Part No)



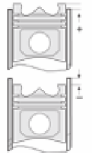
**Segman Seti**  
(Ring Set)



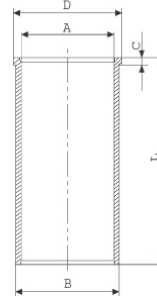
**Silindir Gömleği**  
(Liner)



**Silindir Kit**  
(Assembly Set)



**Piston - Blok Montaj**  
**Yüksekliği**  
(Piston - Block  
Assembly Height)



14-028641-00-D  
B : 107.170  
L : 198.000  
D : 109.900  
C : 5.000

Dış Çap 0,20mm Farklı,  
(Outside Diameter  
0,20 mm Different)

14-028642-00-D  
B : 107.470  
L : 198.000  
D : 109.900  
C : 5.000

Dış Çap 0,50mm Farklı  
(Outside Diameter  
0,50 mm Different)

14-028643-00-D  
B : 108.000  
L : 198.000  
D : 110.500  
C : 5.500

Dış Çap 1,00 mm Farklı  
(Outside Diameter  
1,00 mm Different)

14-028644-00-D  
B : 108.500  
L : 198.000  
D : 111.000  
C : 6.000

Dış Çap 1,50 mm Farklı  
(Outside Diameter  
1,50 mm Different)

