



FORD PKW - Ø 104,77

87-70843-STDB

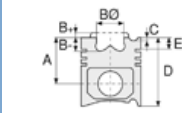


Motor Özellikleri
(Engine Specifications)

İmalatçı (Manufacturer):
FORD PKW
Çap (Diameter): Ø 104,77
FM Grup No: 3049

360 TC TORNADO

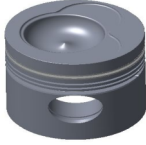
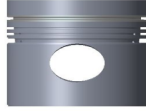
6 Sil. Dizel 5944cc
110 Kw (150PS) 15,7:1
2017, 2115, 2217,
2517, CARGO D 0915,
D 1114, D 1115, D 1314,
D 1315, D 1315K,
D 1515, D 1515K
1981....



Piston Ölçüleri
(Piston Dimensions)

A : 71.250
B - : 22.000
BØ : 60.250
BX : 7.650
C1 : 2.300
D : 119.900
E : 19.300

Pim: 41 x 87,12



Piston Özellikleri
(Piston Features)

Segman Taşıyıcı
(Ring Carrier)
Gözarası Konik
(Conical Eye Gap)



Piston Parça No
(Piston Part No)

87-837400-02
87-70843-STDB
87-837400-03
87-70843-STD1B
- 0,20 mm Kısa (Short)

87-843200-02
87-70843-STDC

87-843200-03
87-70843-STD1C
0,20 mm Kısa (Short)



Segman Seti
(Ring Set)

06-837400-20-STD
3.100 CR KV1
2.385 STD
2.385 STD
4.750 CR STD

İçi Krom Kaplı
Gömlekte Kullanılmaz
(Inside Chrome Plated
Not Used on Shirts) /

Goetze® LKZ-Ring®

06-843200-00-STD

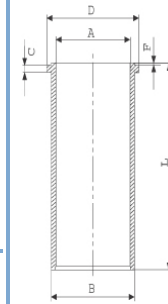
3.100 PSP KV1
2.385 P STD
2.385 P STD
4.750 CR STD

Goetze® LKZ-Ring®



Silindir Gömleği
(Liner)

14-040301-00-DH
B : 108.975
L : 218.507
D : 112.586
C : 4.737
F : 0.700



İçi Krom Kaplı No 1
(Inside Chrome Plated
No 1)

14-040302-00-DH
B : 108.988
L : 218.507
D : 112.586
C : 4.737
F : 0.700

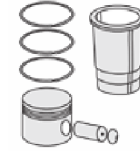
İçi Krom Kaplı No 2
(Inside Chrome Plated
No 2)

14-040303-00-DH
B : 109.001
L : 218.507
D : 112.586
C : 4.737
F : 0.700

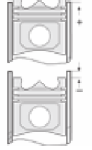
İçi Krom Kaplı No 3
(Inside Chrome Plated
No 3)

14-040304-00-DH
B : 109.014
L : 218.507
D : 112.586
C : 4.737
F : 0.700

İçi Krom Kaplı No 4
(Inside Chrome Plated
No 4)



Silindir Kit
(Assembly Set)



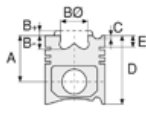
Piston - Blok Montaj
Yüksekliği
(Piston - Block
Assembly Height)

+ 0,380 / + 0,152





Motor Özellikleri
(Engine Specifications)



Piston Ölçüleri
(Piston Dimensions)



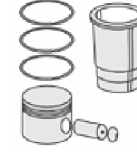
Piston Parça No
(Piston Part No)



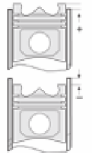
Segman Seti
(Ring Set)



Silindir Gömleği
(Liner)



Silindir Kit
(Assembly Set)



Piston - Blok Montaj
Yüksekliği
(Piston - Block
Assembly Height)

14-040305-00-DH
B : 109.177
L : 218.507
D : 112.586
C : 4.737
F : 0.700

İçi Krom Kaplı No 5
(Inside Chrome Plated
No 5)

14-040306-00-DH
B : 109.305
L : 218.507
D : 112.586
C : 4.737
F : 0.700

İçi Krom Kaplı No 6
(Inside Chrome Plated
No 6)

14-040307-00-DH
B : 109.433
L : 218.507
D : 112.586
C : 4.737
F : 0.700

İçi Krom Kaplı No 7
(Inside Chrome Plated
No 7)

14-040308-00-DH
B : 109.561
L : 218.507
D : 112.586
C : 4.737
F : 0.700

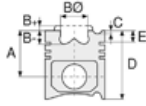
İçi Krom Kaplı No 8
(Inside Chrome Plated
No 8)

14-041950-00-D
B : 109.050
L : 218.510
D : 112.586
C : 4.737
F : 0.700





Motor Özellikleri
(Engine Specifications)



Piston Ölçüleri
(Piston Dimensions)



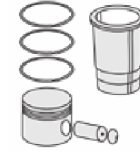
Piston Parça No
(Piston Part No)



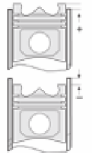
Segman Seti
(Ring Set)



Silindir Gömleği
(Liner)



Silindir Kit
(Assembly Set)



Piston - Blok Montaj
Yüksekliği
(Piston - Block
Assembly Height)

14-041954-00-D
B : 109.300
L : 218.510
D : 112.586
C : 4.737
F : 0.700

Dış Çap 0,25mm Farklı
(Outside Diameter
0,25 mm Different)

14-041955-00-D
B : 109.550
L : 218.510
D : 112.586
C : 4.737
F : 0.700

Dış Çap 0,50mm Farklı
(Outside Diameter
0,50 mm Different)

14-041956-00-D
B : 110.050
L : 218.510
D : 113.000
C : 5.000
F : 0.700

Dış Çap 1,00mm Farklı
(Outside Diameter
1,00 mm Different)

14-041957-00-D
B : 109.100
L : 218.510
D : 112.586
C : 4.737
F : 0.700

Dış Çap 0,05mm Farklı
(Outside Diameter
0,05 mm Different)

