



HONDA - Ø 75

87-71105-STD



**Motor Özellikleri**  
(Engine Specifications)

İmalatçı (Manufacturer):  
HONDA  
Çap (Diameter): Ø 75  
FM Grup No: 3620

**D 16**  
4 Sil. Benzinli 1600cc  
78-96Kw/106-131Hp  
Civic 1.6  
1996 - 2001

**Piston Ölçüleri**  
(Piston Dimensions)

A : 30.000  
B- : 3.470  
BØ : 63.630  
C1 : 2.000  
C2 : 3.600  
D : 50.000  
E : 6.000

Pim : 19 x 56



**Piston Özellikleri**  
(Piston Features)

Biyel Koluna Sıkı Geçme  
(Close-Fit To Connecting Rod)  
Gözarası Konik  
(Conical Eye Gap)



**Piston Parça No**  
(Piston Part No)

87-859400-02  
87-71105-STD  
87-859407-02  
87-71105-0,50

**Segman Seti**  
(Ring Set)

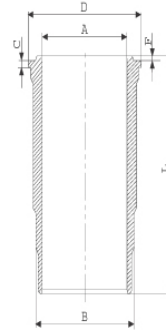
06-859400-50-STD  
06-859407-50-0,50 mm

1.000 CR ST  
1.200 P GOE  
2.850 CR ST



**Silindir Gömleği**  
(Liner)

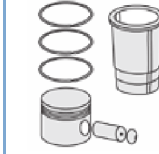
14-450630-00 WH  
B : 139.500  
L : 260.000  
D : 150.000  
C : 8.070



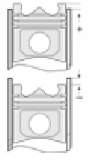
O-Ring Bilgi  
(O-Ring Information)  
Dış yüzeyi fosfat kaplı  
(Outer surface is  
Phosphate Coated)  
24-35043-60/0  
2x 139,5\*3,95\*4,70 FPM

14-450631-00 WH  
B : 139.500  
L : 260.000  
D : 150.000  
C : 8.570

Flanş Kalınlığı+ Boğaz  
Alt Çapı 0,50 mm farklı  
(Flange Thickness+  
Throat Bottom Diameter  
0.50 mm Different)  
24-35043-60/0  
2x 139,5\*3,95\*4,70 FPM



**Silindir Kit**  
(Assembly Set)



**Piston - Blok Montaj**  
Yüksekliği  
(Piston - Block  
Assembly Height)



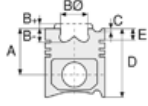


HONDA - Ø 75

87-71105-STD



**Motor Özellikleri**  
(Engine Specifications)



**Piston Ölçüleri**  
(Piston Dimensions)



**Piston Parça No**  
(Piston Part No)



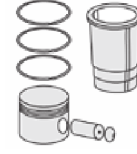
**Segman Seti**  
(Ring Set)



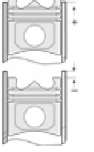
**Silindir Gömleği**  
(Liner)

14-450632-00 WH  
B : 139.500  
L : 260.000  
D : 150.000  
C : 9.070

Flanş Kalınlığı + Boğaz  
Alt Çapı 1,0 mm farklı  
(Flange Thickness +  
Throat Bottom  
Diameter  
1.0 mm different)  
24-35043-60/O  
2x 139,5\*3,95\*4,70 FPM



**Silindir Kit**  
(Assembly Set)



**Piston - Blok Montaj**  
**Yüksekliği**  
(Piston - Block  
Assembly Height)

