



Motor Özellikleri
(Engine Specifications)

İmalatçı (Manufacturer):
ISUZU
Çap (Diameter): Ø 112
FM Grup No: 3909

4HF1

4 Sil. Dizel 4334cc
73,6/88,3 kW
(100/120 PS) 18,5:1
MD23 MIDIBUS,
MD25 MIDIBUS,
MD27 MIDIBUS,
NKR 66 KAMYONET,
NPR 66 KAMYON
1987....

Piston Ölçüleri
(Piston Dimensions)

A : 60.750
B- : 22.000
BØ : 49.600
BX : 5.000
BY : 1.000
D : 94.500
E : 12.860

Pim: 36 x 79



Piston Özellikleri
(Piston Features)

Segman Taşıyıcı
(Ring Carrier)
Çelik Plaka
(Steel Strut)
Gözarası Konik
(Conical Eye Gap)



Piston Parça No
(Piston Part No)

87-853500-02
87-71237-STD
87-853500-03
87-71237-STD1
0,20 mm Kısa (Short)



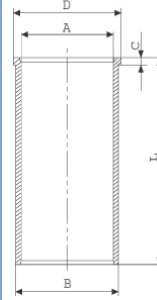
Segman Seti
(Ring Set)

06-853500-00-STD
3.000 CR ST
2.500 CRP ST
4.000 NT ST



Silindir Gömleği
(Liner)

14-020780-10-DH
B : 115.000
L : 180.000
D : 121.700
C : 6.125

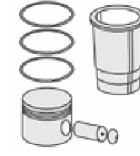
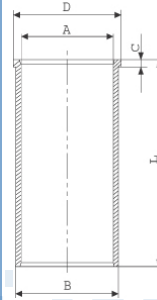


Dış Yüzeyi
Fosfat Kaplı
(Outer Surface
Phosphate Coated)

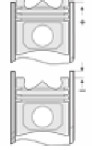
14-020781-10-DH
B : 115.250
L : 180.000
D : 121.950
C : 6.375

Dış Çap 0,25 mm Farklı
(Outside Diameter
0,25 mm Different)

14-020782-10 DH
B : 115.500
L : 180.000
D : 122.200
C : 6.625



Silindir Kit
(Assembly Set)



Piston - Blok Montaj
Yüksekliği
(Piston - Block
Assembly Height)

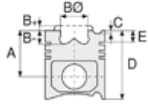
Deliksiz Conta ile
(With No Hole Gasket)
+0,57 /+0,65

2.Delik Conta ile
(With Second
Hole Gasket)
+0,66 /+0,72





Motor Özellikleri
(Engine Specifications)



Piston Ölçüleri
(Piston Dimensions)



Piston Parça No
(Piston Part No)



Segman Seti
(Ring Set)



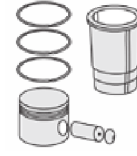
Silindir Gömleği
(Liner)

14-022571-00 D
B : 115.270
L : 180.000
D : 121.950
C : 6.375

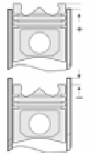
Dış Çap 0,25 mm farklı
(Outside Diameter
0,25 mm Different)

14-022572-00 D
B : 115.520
L : 180.000
D : 122.200
C : 6.625

Dış Çap 0,50 mm farklı
(Outside Diameter
0,50 mm Different)



Silindir Kit
(Assembly Set)



Piston - Blok Montaj
Yüksekliği
(Piston - Block
Assembly Height)

