



KHD - Ø 100

87-71323-STD A



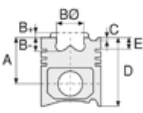
**Motor Özellikleri**  
(Engine Specifications)

İmalatçı (Manufacturer):  
KHD  
Çap (Diameter): Ø 100  
FM Grup No: 4507

**F2 L 912 D**  
2 Sil. Dizel 1884cc 26,5/28  
Kw (36/38 PS) 17:1  
TRACTOR D2506,  
TRACTOR D2807,  
TRACTOR D3006,  
TRACTOR D3607,  
TRACTOR Dx36  
1967 - 1972

**F3 L 912 D**  
3 Sil. Dizel 2826cc 26/43  
Kw (35/58,5 PS) 17:1  
TRACTOR D4006,  
TRACTOR D4007,  
TRACTOR D4505,  
TRACTOR D4506,  
TRACTOR D4507,  
TRACTOR D4807,  
TRACTOR D5006,  
TRACTOR D5206,  
TRACTOR D5207,  
TRACTOR DX3.10,  
TRACTOR DX3.20,  
TRACTOR DX3.30,  
TRACTOR DX50,  
TRACTOR Dx55  
1967 - 1972

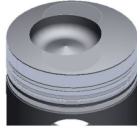
**F4 L 912 D**  
4 Sil. Dizel 3768cc 43/59  
Kw (58,5/80 PS) 17:1  
TRACTOR D4006,  
TRACTOR D5006,  
TRACTOR D5506,  
TRACTOR D6006,  
TRACTOR D6206,  
TRACTOR D6207,  
TRACTOR D6507,  
TRACTOR D6806,



**Piston Ölçüleri**  
(Piston Dimensions)

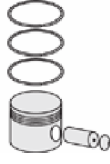
A : 71.900  
B - : 21.400  
B : 5.700  
BØ : 55.000  
BX : 5.000  
C1 : 1.100  
C2 : 1.100  
D : 123.600  
E : 16.400

Pim : 35 x 80



**Piston Özellikleri**  
(Piston Features)

Yağ Püskürtme Oyuğu  
(Oil Jet Cut-Out)  
Gözarası Düz  
(Flat Eye Gap)



**Piston Parça No**  
(Piston Part No)

87-172500-22  
87-71323-STD A  
87-172507-22  
87-71323-050A  
87-172511-22  
87-71323-100A



**Segman Seti**  
(Ring Set)

06-172500-20-STD  
06-172507-20-0,50 mm  
06-172511-20-1,00 mm

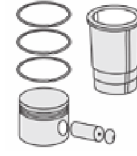
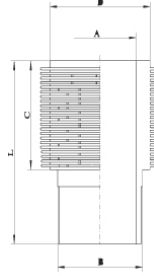
3.000 CR KV1  
2.500 STD  
2.500 STD  
5.000 CR STD

Goetze® LKZ-Ring®



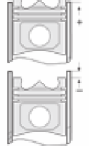
**Silindir Gömleği**  
(Liner)

14-900080-00-WH  
B : 110.000  
L : 222.300  
D : 120.000  
C : 137.300



**Silindir Kit**  
(Assembly Set)

88-172500-22-STD  
88-71323-STD A



**Piston - Blok Montaj**  
Yüksekliği  
(Piston - Block  
Assembly Height)

+1,00 / +1,20





KHD - Ø 100

87-71323-STDA



**Motor Özellikleri**  
(Engine Specifications)

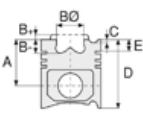
TRACTOR D6807,  
TRACTOR D7006,  
TRACTOR D7007,  
TRACTOR D7206,  
TRACTOR D7207,  
TRACTOR DX3.70,  
TRACTOR DX4.10  
1967 - 1972

**F5 L 912 D**

5 Sil. Dizel 4712cc 63/74  
Kw (85/100 PS) 17:1  
TRACTOR DX85,  
TRACTOR Dx90  
1967 - 1972

**F6 L 912 D**

6 Sil. Dizel 5652cc 59/82  
Kw (80/112 PS) 17:1  
D10006, D7506, D8006,  
D9006, D9009, DX110,  
DX6.10, TRACTOR 120D  
1967 - 1972



**Piston Ölçüleri**  
(Piston Dimensions)



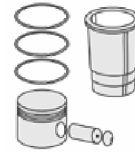
**Piston Parça No**  
(Piston Part No)



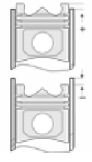
**Segman Seti**  
(Ring Set)



**Silindir Gömleği**  
(Liner)



**Silindir Kit**  
(Assembly Set)



**Piston - Blok Montaj**  
Yüksekliği  
(Piston - Block  
Assembly Height)

