



KHD - Ø 100

87-71324-STDA



Motor Özellikleri
(Engine Specifications)

İmalatçı (Manufacturer):
KHD
Çap (Diameter): Ø 100
FM Grup No: 4508

F2 L 912 D
2 Sil. Dizel 1884cc 26,5/28
Kw (36/38 PS) 17:1
TRACTOR D2506,
TRACTOR D2807,
TRACTOR D3006,
TRACTOR D3607,
TRACTOR Dx36
1967 - 1972

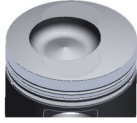
F3 L 912 D
3 Sil. Dizel 2826cc 26/43
Kw (35/58,5 PS) 17:1
TRACTOR D4006,
TRACTOR D4007,
TRACTOR D4505,
TRACTOR D4506,
TRACTOR D4507,
TRACTOR D4807,
TRACTOR D5006,
TRACTOR D5206,
TRACTOR D5207,
TRACTOR DX3.10,
TRACTOR DX3.20,
TRACTOR DX3.30,
TRACTOR DX50,
TRACTOR Dx55
1967 - 1972

F4 L 912 D
4 Sil. Dizel 3768cc 43/59
Kw (58,5/80 PS) 17:1
TRACTOR D4006,
TRACTOR D5006,
TRACTOR D5506,
TRACTOR D6006,
TRACTOR D6206,
TRACTOR D6207,
TRACTOR D6507,
TRACTOR D6806,

Piston Ölçüleri
(Piston Dimensions)

A : 71.900
B - : 21.400
B : 5.700
BØ : 55.000
BX : 5.000
C1 : 1.100
D : 123.600
E : 18.000

Pim : 35 x 75



Piston Özellikleri
(Piston Features)



Yağ Püskürtme Oyuğu
(Oil Jet Cut-Out)
Gözarası Düz
(Flat Eye Gap)

Piston Parça No
(Piston Part No)

87-741800-32
87-71324-STDA
87-741807-32
87-71324-050A
87-741811-32
87-71324-100A

Segman Seti
(Ring Set)

06-741800-20-STD
06-741807-20-0,50 mm
06-741811-20-1,00 mm

2.940  CR IKA
2.550  STD
5.000  CR STD

Silindir Gömleği
(Liner)

Silindir Kit
(Assembly Set)

Piston - Blok Montaj
Yüksekliği
(Piston - Block
Assembly Height)

+1,00 / +1,20





KHD - Ø 100

87-71324-STDA

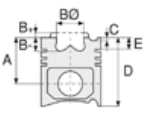


Motor Özellikleri
(Engine Specifications)

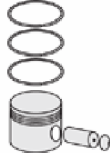
TRACTOR D6807,
TRACTOR D7006,
TRACTOR D7007,
TRACTOR D7206,
TRACTOR D7207,
TRACTOR DX3.70,
TRACTOR DX4.10
1967 - 1972

F5 L 912 D
5 Sil. Dizel 4712cc 63/74
Kw (85/100 PS) 17:1
TRACTOR DX85,
TRACTOR Dx90
1967 - 1972

F6 L 912 D
6 Sil. Dizel 5652cc 59/82
Kw (80/112 PS) 17:1
D10006, D7506, D8006,
D9006, D9009, DX110,
DX6.10, TRACTOR 120D
1967 - 1972



Piston Ölçüleri
(Piston Dimensions)



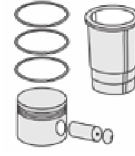
Piston Parça No
(Piston Part No)



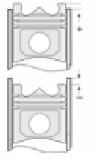
Segman Seti
(Ring Set)



Silindir Gömleği
(Liner)



Silindir Kit
(Assembly Set)



Piston - Blok Montaj
Yüksekliği
(Piston - Block
Assembly Height)

