



FORD LKW - Ø 108

87-71486-STD

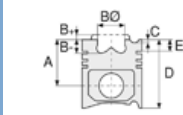


Motor Özellikleri
(Engine Specifications)

İmalatçı (Manufacturer):
FORD LKW
Çap (Diameter): Ø 108
FM Grup No: 3070

DEUTZ BF6M 1013
EURO2

6 Sil. Dizel 7146cc 195
Kw (265 PS) 17,6:1
Turbo Intercooled /
KHD ve Otokar ile
ortak motor
(Common Engine With
Turbo Intercooled /
KHD and Otokar)
1827, 2527, 3227
2001 - 2003



Piston Ölçüleri
(Piston Dimensions)

A : 71.150
B - : 19.850
BØ : 63.000
BX : 4.000
BY : 2.300
D : 108.000
E : 14.000

Pim: 42 x 86



Piston Özellikleri
(Piston Features)

Segman Taşıyıcı
(Ring Carrier)
Yağ Püskürtme Oyuğu
(Oil Jet Cut-out)
Gözarası Konik
(Conical Eye Gap)



Piston Parça No
(Piston Part No)

87-136900-02
87-71486-STD



Segman Seti
(Ring Set)

06-136900-00-STD

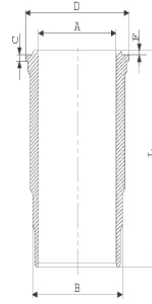
3.000 CK KV1
2.000 NTP KV1
3.500 CRP STD
Goetze® LKZ-Ring®



Silindir Gömleği
(Liner)

14-480040-00-WH

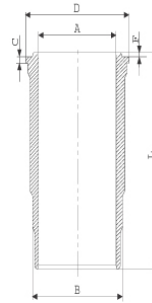
B : 118.000
L : 229.100
D : 128.500
C : 9.000
F : 1.100



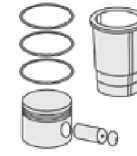
O-RİNG Bilgi
(O Ring Information)
24-35047-30/O
2 X (112*3) FKM
PEROXIDE

14-480720-00-WH

B : 120.000
L : 229.100
D : 128.500
C : 9.000
F : 1.100

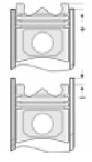


Dış Yüzeyi
Fosfat Kaplı
(Outer Surface
Phosphate Coated)



Silindir Kit
(Assembly Set)

88-136900-02-STD
88-71486-STD



Piston - Blok Montaj
Yüksekliği
(Piston - Block
Assembly Height)

+ 0,25 / + 0,54
+ 0,54 / + 0,64
+ 0,64 / + 0,74



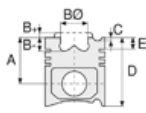


FORD LKW - Ø 108

87-71486-STD



Motor Özellikleri
(Engine Specifications)



Piston Ölçüleri
(Piston Dimensions)



Piston Parça No
(Piston Part No)

87-123800-22
87-71486-STD



Segman Seti
(Ring Set)

06-123800-20-STD

3.000  CR KV1
2.000  NTP KV1
3.500  CRP STD
Goetze® LKZ-Ring®



Silindir Gömleği
(Liner)

14-480720-00-WH

Dış Yüzeyi
Fosfat Kaplı
(Outer Surface
Phosphate Coated)

14-480040-00-WH

O-RİNG Bilgi
(O Ring Information)
24-35047-30/O
2 X (112*3) FKM
PEROXIDE

14-480041-00-WH

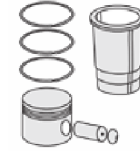
B : 118.000
L : 229.100
D : 128.500
C : 9.500
F : 1.100

Flanş Kalınlığı ve
Flanş Alt Boğaz Çapı
+0,50 mm Farklı
(Flange Thickness and
Flange Bottom Throat
Diameter +0.50mm
Different)

14-480042-00-WH

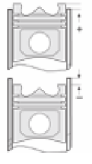
B : 118.000
L : 229.100
D : 128.500
C : 10.000
F : 1.100

Flanş Kalınlığı ve
Flanş Alt Boğaz Çapı
+1,00 Farklı Çalışması
(Flange Thickness and
Flange Bottom Throat
Diameter +1.00
Different Work)



Silindir Kit
(Assembly Set)

89-123800-42-STD
89-71486-STDC



Piston - Blok Montaj
Yüksekliği
(Piston - Block
Assembly Height)

