



VOLVO - Ø 91,48

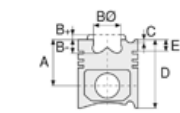
87-71731-STD A



Motor Özellikleri
(Engine Specifications)

İmalatçı (Manufacturer):
VOLVO
Çap (Diameter): Ø 91,48
FM Grup No: 9805

3,152 D
4 Sil. Dizel 2500cc 32,5
Kw (44 PS) 18,4:1 Perkins
-Volvo ve Massey
Ferguson ile ortak motor.
(With Perkins-Volvo And
Massey Common Engine)
DT 7000
1985..



Piston Ölçüleri
(Piston Dimensions)

A : 62.000
B- : 18.550
BØ : 55.930
BX : 6.350
D : 109.620
E : 17.880

Pim : 31,75 x 75,3



Piston Özellikleri
(Piston Features)

Gözarası Düz
(Flat Eye Gap)



Piston Parça No
(Piston Part No)

87-314600-63
87-71731-STD1A
0,25 mm Kısa (Short)
87-314600-62
87-71731-STD A



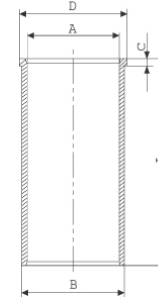
Segman Seti
(Ring Set)

06-314600-20-STD
2.385 CRP KV1
2.385 P GOE
3.160 P GOE
6.350 CRP GOE
6.335 P GOE



Silindir Gömleği
(Liner)

14-025830-00-D
B : 93.810
L : 216.000
D : 96.660
C : 5.000



14-025831-10-D
B : 94.310
L : 216.000
D : 96.660
C : 6.000

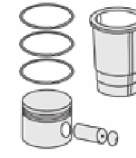
Dış Çap 0,50mm Farklı
(Outside Diameter
0.50mm Different)

14-025832-10-D
B : 94.810
L : 216.000
D : 97.660
C : 6.000

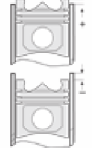
Dış Çap 1,00mm Farklı
(Outside Diameter
1.00mm Different)

14-025833-10-D
B : 95.310
L : 216.000
D : 98.160
C : 6.250

Dış Çap 1,50mm Farklı
(Outside Diameter
1.50mm Different)



Silindir Kit
(Assembly Set)



Piston - Blok Montaj
Yüksekliği
(Piston - Block
Assembly Height)

-0,03 / +0,10





VOLVO - Ø 91,48

87-71731-STDA



Motor Özellikleri
(Engine Specifications)



Piston Ölçüleri
(Piston Dimensions)



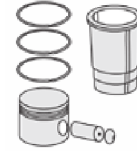
Piston Parça No
(Piston Part No)



Segman Seti
(Ring Set)



Silindir Gömleği
(Liner)



Silindir Kit
(Assembly Set)

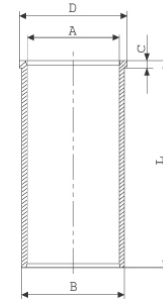


Piston - Blok Montaj
Yüksekliği
(Piston - Block
Assembly Height)

14-025834-10-D
B : 95.810
L : 216.000
D : 98.660
C : 6.500

Dış Çap 1,20mm Farklı
(Outside Diameter
1.20mm Different)

14-026450-00-D
B : 93.820
L : 216.000
D : 96.950
C : 5.000



Geniş Flanşlı
(Wide Flange)

14-026451-10-D
B : 93.820
L : 216.000
D : 96.950
C : 5.500

Dış Çap 0,50mm Farklı
(Outside Diameter
0.50mm Different)

14-026452-10-D
B : 94.820
L : 216.000
D : 97.950
C : 6.000

Dış Çap 1,00mm Farklı
(Outside Diameter
1.00mm Different)

