



MASSEY FERGUSON - Ø 98,48

87-71738-STD



Motor Özellikleri
(Engine Specifications)

İmalatçı (Manufacturer):
MASSEY FERGUSON
Çap (Diameter): Ø 98,48
FM Grup No: 5605

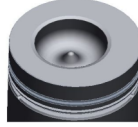
A 6.354.4

6 Sil. Dizel 5794cc
67-84 Kw (91-118 PS) 16:1
24.530, MF 24/33/82/
85/95, MF 2625/2640/
2645/2670/2675/30,
MF 399/520/530/542/
550, MF 90/95/1100/
1114/1200/2620
1971 - 1989

Piston Ölçüleri
(Piston Dimensions)

A : 70.500
B - : 26.050
BØ : 54.100
BX : 3.200
D : 121.300
E : 21.600

Pim: 34,925 x 84,1



Piston Özellikleri
(Piston Features)

Segman Taşıyıcı
(Ring Carrier)
Çelik Plaka
(Steel Strut)
Gözarası Düz
(Flat Eye Gap)

Piston Parça No
(Piston Part No)

87-318900-22
87-71738-STD
87-318900-23
87-71738-STD1
0,58 mm Kısa (Short)

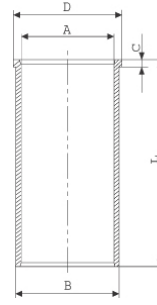
Segman Seti
(Ring Set)

06-318900-10-STD
2.385 CRP KVI
2.385 P STD
4.747 CRP STD



Silindir Gömleği
(Liner)

14-021980-00-D
B : 104.280
L : 226.440
D : 107.380
C : 3.800



14-021981-00-D
B : 104.780
L : 226.440
D : 107.400
C : 4.000

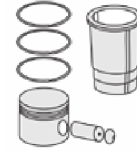
Dış Çap 0,50 mm Farklı
(Outer Diameter
0,50 mm Different)

14-021982-00-D
B : 105.280
L : 226.440
D : 107.420
C : 4.250

Dış Çap 1,00 mm Farklı
(Outer Diameter
1,00 mm Different)

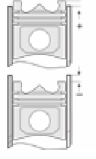
14-045820-10-D
B : 103.330
L : 227.280
D : 106.420
C : 3.800
F : 0.900

Silindir Kit
(Assembly Set)



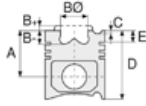
Piston - Blok Montaj
Yüksekliği
(Piston - Block
Assembly Height)

0 / + 0,18





Motor Özellikleri
(Engine Specifications)



Piston Ölçüleri
(Piston Dimensions)



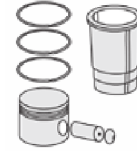
Piston Parça No
(Piston Part No)



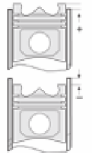
Segman Seti
(Ring Set)



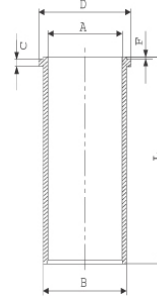
Silindir Gömleği
(Liner)



Silindir Kit
(Assembly Set)



Piston - Blok Montaj
Yüksekliği
(Piston - Block
Assembly Height)



14-045821-10-D
B : 103.830
L : 227.280
D : 106.920
C : 4.300
F : 0.900

Dış Çap 0,50mm Farklı
(Outer Diameter
0,50 mm Different)

14-045822-10-D
B : 104.330
L : 227.280
D : 107.420
C : 4.800
F : 0.900

Dış Çap 1,00mm Farklı
(Outer Diameter
1,00 mm Different)

14-045823-10-D
B : 104.830
L : 227.280
D : 107.920
C : 5.300
F : 0.900

