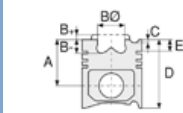




**Motor Özellikleri**  
(Engine Specifications)

İmalatçı (Manufacturer):  
PERKINS TRK  
Çap (Diameter): Ø 101,079  
FM Grup No: 7022

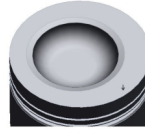
4.248  
4 Sil. Dizel 4064cc  
62 Kw (85 PS) 16:1  
MF 285 S  
1982....



**Piston Ölçüleri**  
(Piston Dimensions)

A : 70.300  
B- : 21.130  
BØ : 61.450  
BX : 3.200  
D : 121.100  
E : 21.400

Pim: 34,925 x 84,1



**Piston Özellikleri**  
(Piston Features)

Çelik Plaka  
(Steel Strut)  
Gözarası Düz  
(Flat Eye Gap)



**Piston Parça No**  
(Piston Part No)

87-322700-33  
87-71741-STD1A  
0,41 mm Kısa (Short)  
87-322700-32  
87-71741-STD A



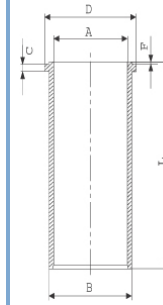
**Segman Seti**  
(Ring Set)

06-322700-90-STD  
2.500 CKP KV1  
2.500 P STD  
5.000 CRP STD



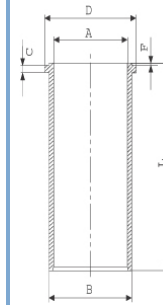
**Silindir Gömleği**  
(Liner)

14-040290-00-DH  
B : 104.230  
L : 227.300  
D : 107.400  
C : 3.800  
F : 0.850



14-041140-00-D

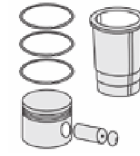
B : 104.350  
L : 227.280  
D : 107.440  
C : 3.800  
F : 0.900



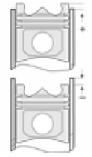
14-041141-10-D

B : 104.850  
L : 227.280  
D : 107.440  
C : 3.800  
F : 0.900

Dış Çap 0,50mm Farklı  
(Outer Diameter  
0,50 mm Different)



**Silindir Kit**  
(Assembly Set)



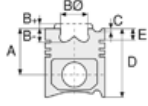
**Piston - Blok Montaj**  
Yüksekliği  
(Piston - Block  
Assembly Height)

+0,046/+0,262





**Motor Özellikleri**  
(Engine Specifications)



**Piston Ölçüleri**  
(Piston Dimensions)



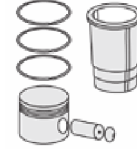
**Piston Parça No**  
(Piston Part No)



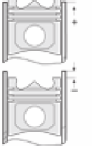
**Segman Seti**  
(Ring Set)



**Silindir Gömleği**  
(Liner)



**Silindir Kit**  
(Assembly Set)



**Piston - Blok Montaj**  
**Yüksekliği**  
(Piston - Block  
Assembly Height)

14-041610-00-D

B : 104.280  
L : 227.280  
D : 107.380  
C : 3.800  
F : 0.900

