



Motor Özellikleri
(Engine Specifications)

İmalatçı (Manufacturer):
PERKINS TRK
Çap (Diameter): Ø 101,079
FM Grup No: 7021

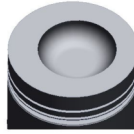
4.248

4 Sil. Dizel 4064cc
62 Kw (85 PS) 16:1
MF 11,178,185,186,188,
194, MF 285 S
1982....

Piston Ölçüleri
(Piston Dimensions)

A : 70.300
B- : 21.100
BØ : 61.450
BX : 3.200
D : 121.100
E : 21.400

Pim: 34,925 x 84,1



Piston Özellikleri
(Piston Features)

Çelik Plaka
(Steel Strut)
Gözarası Düz
(Flat Eye Gap)



Piston Parça No
(Piston Part No)

87-322700-23
87-71742-STD1A
0,40 mm Kısa (Short)
87-322700-22
87-71742-STDA



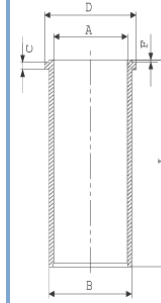
Segman Seti
(Ring Set)

06-322700-90-STD
2.500 CKP KV1
2.500 P STD
5.000 CRP STD



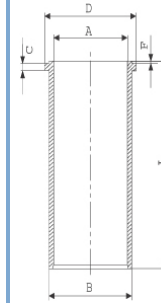
Silindir Gömleği
(Liner)

14-040290-00-DH
B : 104.230
L : 227.300
D : 107.400
C : 3.800
F : 0.850



14-041140-00-D

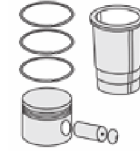
B : 104.350
L : 227.280
D : 107.440
C : 3.800
F : 0.900



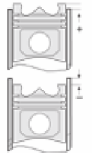
14-041141-10-D

B : 104.850
L : 227.280
D : 107.440
C : 3.800
F : 0.900

Dış Çap 0,50mm Farklı
(Outer Diameter
0,50 mm Different)



Silindir Kit
(Assembly Set)



Piston - Blok Montaj
Yüksekliği
(Piston - Block
Assembly Height)

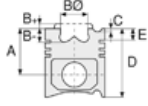
+ 0,08/+0,25

+0,60 / +0,65

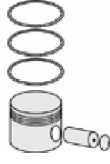




Motor Özellikleri
(Engine Specifications)



Piston Ölçüleri
(Piston Dimensions)



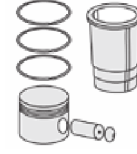
Piston Parça No
(Piston Part No)



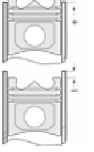
Segman Seti
(Ring Set)



Silindir Gömleği
(Liner)



Silindir Kit
(Assembly Set)



Piston - Blok Montaj
Yüksekliği
(Piston - Block
Assembly Height)

14-041610-00-D

B : 104.280
L : 227.280
D : 107.380
C : 3.800
F : 0.900

