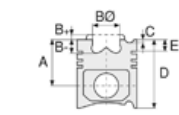




Motor Özellikleri
(Engine Specifications)

İmalatçı (Manufacturer):
PEUGEOT-FORD PKW
Çap (Diameter): Ø 94
FM Grup No: 7120

XD 2/ 2 P / Xd94
4 Sil. Dizel 2304cc 46/52
Kw (63/72 PS) 22, 2:1
504 D/GLD/Break D,
504 F 40/H 40 Ambulans,
504 Utilitaire,
505 GRD/SRD,
J 9 1800, JTP 2 60-1800
1980...



Piston Ölçüleri
(Piston Dimensions)

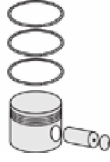
A : 57.420
B - : 1.800
D : 99.920
E : 16.600

Pim : 28 x 81



Piston Özellikleri
(Piston Features)

Gözarası Düz
(Flat Eye Gap)



Piston Parça No
(Piston Part No)

87-318700-32
87-71765-STD
87-318706-32
87-71765-040
87-318707-32
87-71765-0,50
87-318708-32
87-71765 060
87-318711-32
87-71765-100



Segman Seti
(Ring Set)

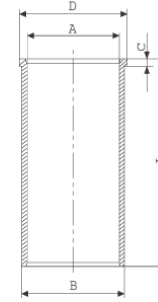
06-318700-10-STD
06-318706-10-0,40 mm
06-318707-10-0,50 mm
06-318708-10-0,60 mm
06-318711-10-1,00 mm

2.000 CRP KV1
2.000 P STD
4.000 CRP STD

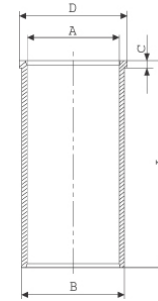


Silindir Gömleği
(Liner)

14-020660-00-D
B : 97.000
L : 170.600
D : 99.500
C : 4.000

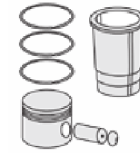
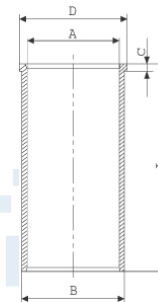


14-021520-00-D
B : 98.000
L : 170.600
D : 100.000
C : 6.000

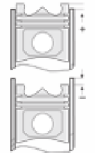


Dış çap 1,0 mm farklı
(Outer Diameter
1.00 mm Different
Semi-finished)

14-029010-00 D
B : 98.000
L : 166.600
D : 100.000
C : 6.000



Silindir Kit
(Assembly Set)



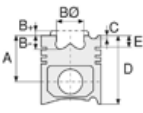
Piston - Blok Montaj
Yüksekliği
(Piston - Block
Assembly Height)

0 / + 0,84 Conta ile birlikte
(With Gasket)
0,75 / 0,90

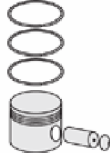




Motor Özellikleri
(Engine Specifications)



Piston Ölçüleri
(Piston Dimensions)



Piston Parça No
(Piston Part No)



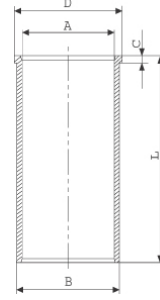
Segman Seti
(Ring Set)



Silindir Gömleği
(Liner)

4,00 mm Kısa ve
Dış Çap 1,00mm Farklı
(Short and Outer
Diameter 1.00mm
Different)

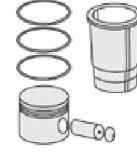
14-029020-00-D
B : 97.000
L : 166.600
D : 99.500
C : 4.000



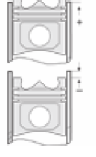
4,00 mm Kısa (Short)

14-029021-00-D
B : 97.500
L : 166.600
D : 100.000
C : 4.000

Dış Çap 0,50mm Farklı
(Outside Diameter
0.50mm Different)



Silindir Kit
(Assembly Set)



Piston - Blok Montaj
Yüksekliği
(Piston - Block
Assembly Height)

