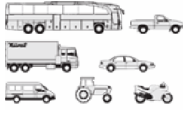




STEYR - Ø 100

87-72042-STD



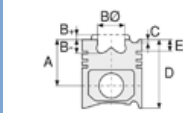
Motor Özellikleri
(Engine Specifications)

İmalatçı (Manufacturer):
STEYR
Çap (Diameter): Ø 100
FM Grup No: 7902

WD 208 40-2
2 Sil. Dizel 1570cc
22Kw(30 PS)
8033 Trk

WD 308 46-3 / 47-3
3 Sil. Dizel 2535cc
34-37 Kw(45/50 PS)
8043 S, 8050 S19,
8053 S
1978....

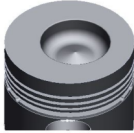
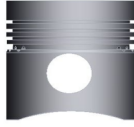
WD 408,45-4
4 Sil. Dizel 3142cc
52 Kw(70 PS)
8073 S
1968....



Piston Ölçüleri
(Piston Dimensions)

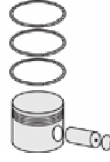
A : 63.400
B- : 19.400
BØ : 53.750
BX : 4.500
D : 103.900
E : 17.300

Pim: 35 x 83



Piston Özellikleri
(Piston Features)

Gözarası Düz
(Flat Eye Gap)



Piston Parça No
(Piston Part No)

87-361900-02
87-72042-STD



Segman Seti
(Ring Set)

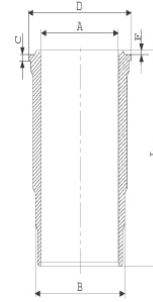
06-361900-10-STD

2.500 CRP STD
2.500 P STD
2.500 P STD
4.000 CRP STD



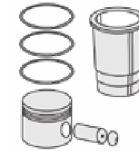
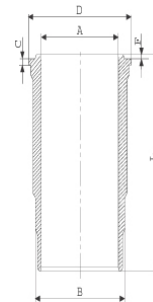
Silindir Gömleği
(Liner)

14-451080-00-WH
B : 109.400
L : 197.000
D : 118.000
C : 9.000
F : 1.100



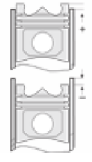
Dış Yüzeyi Krom Kaplı
(Outer Surface
Chrome Plated)

14-450490-00-WH
B : 109.400
L : 197.000
D : 118.000
C : 9.000
F : 1.100



Silindir Kit
(Assembly Set)

88-361900-22-STD
88-72042-STDB



Piston - Blok Montaj
Yüksekliği
(Piston - Block
Assembly Height)

+ 0,25 / + 0,28



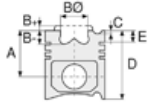


STEYR - Ø 100

87-72042-STD



Motor Özellikleri
(Engine Specifications)



Piston Ölçüleri
(Piston Dimensions)



Piston Parça No
(Piston Part No)

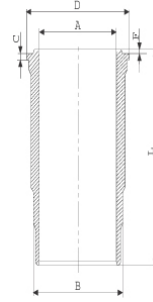


Segman Seti
(Ring Set)

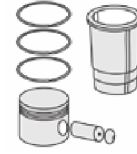


Silindir Gömleği
(Liner)

14-450150-00-WH
B : 109.400
L : 197.000
D : 118.000
C : 9.000
F : 1.100

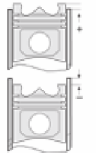


Dış Yüzeyi Krom Kaplı
(Outer Surface
Chrome Plated)



Silindir Kit
(Assembly Set)

88-361900-42-STD
88-72042-STD



Piston - Blok Montaj
Yüksekliği
(Piston - Block
Assembly Height)

