



VOLVO - Ø 130,18

87-72237-STDB



Motor Özellikleri
(Engine Specifications)

İmalatçı (Manufacturer):
VOLVO
Çap (Diameter): Ø 130,18
FM Grup No: 8898

TD121F
6 Sil. Dizel 11977cc
243-265-283Kw
(306-308-330Ps) 14,2:1
CH230, F12
1984 - 1988

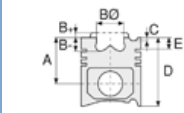
TD120FC
6 Sil. Dizel 11977cc
265Kw(360Ps)
TURBO INTERCOOLED
F12
1980 - 1984

TD120G
6 Sil. Dizel 11977cc
225-227-243Kw
(306-308-330Ps)
Turbo
F12, N10, N12
1980....

TD120GA
6 Sil. Dizel 11977cc
225-227-243Kw
(306-308-330Ps)
Turbo
F12
1980....

TD121FD
6 Sil. Dizel 11977cc
243-265-283Kw
(306-308-330Ps)
Turbo
CH230, F12
1984 - 1988

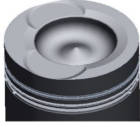
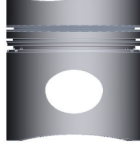
TD121F
6 Sil. Dizel 11977cc
265Kw(360Ps) 14,2:1
CH230T, F12, N10
1980 - 1984



Piston Ölçüleri
(Piston Dimensions)

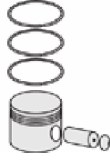
A : 114.200
B- : 27.950
BØ : 79.000
BX : 4.000
C1 : 2.500
D : 175.000
E : 35.000

Pim: 55 x 114



Piston Özellikleri
(Piston Features)

Segman Taşıyıcı
(Ring Carrier)
Gözarası Düz
(Flat Eye Gap)



Piston Parça No
(Piston Part No)

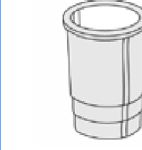
87-405600-63
87-72237-STDB



Segman Seti
(Ring Set)

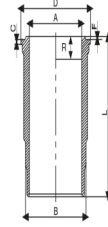
06-405600-10-STD

2.385 CRP KV1
3.160 CRP STD
4.747 CRP STD



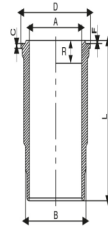
Silindir Gömleği
(Liner)

14-459030-00-WH
B : 143.909
L : 310.515
D : 157.582
C : 13.545
F : 0.686
R : 18.000

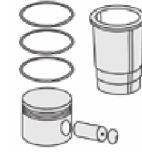


O-Ring Bilgi
(O-Ring Information)
24-35031-01/O
1x 132,8*5,8 FPM LILA
1x 132,8*5,8 EPDM
1x 132,5*2,4 FPM

14-457960-00-WH
B : 143.890
L : 311.000
D : 157.620
C : 10.550
F : 0.686
R : 18.800

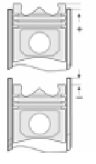


O-Ring Bilgi
(O-Ring Information)
24-35049-90/O
1x 143,50*1,60 FPM
1x 142,80*5,80 FPM
BLACK
1x 142,80*5,80 FPM
PURPLE



Silindir Kit
(Assembly Set)

88-405600-63-STD
88-72237-STDB



Piston - Blok Montaj
Yüksekliği
(Piston - Block
Assembly Height)

- 0,05 / + 0,45

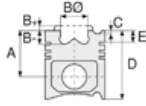


VOLVO - Ø 130,18

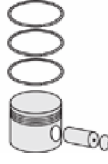
87-72237-STD B



Motor Özellikleri
(Engine Specifications)



Piston Ölçüleri
(Piston Dimensions)



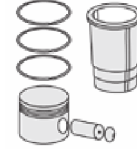
Piston Parça No
(Piston Part No)



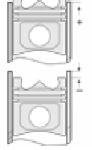
Segman Seti
(Ring Set)



Silindir Gömleği
(Liner)



Silindir Kit
(Assembly Set)



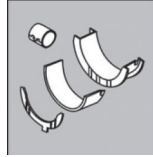
Piston - Blok Montaj
Yüksekliği
(Piston - Block
Assembly Height)

ANA YATAK
(MAIN BED)



H1053/7 STD

AY YATAK
(MOON BED)



A131/4 STD

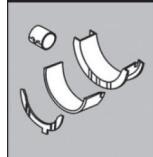
FULL TAKIM CONTA SETİ
(FULL TOOL GASKET SET)



Ge240

KOL BURCU
(ARM BUSH)

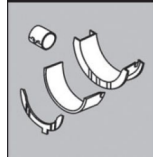
55-3925 SEMI



55-4509 STD

55-4594 SEMI

KOL YATAK
(ARM BED)



71-3613/6 STD

71-4236/6 STD

SİL. KAPAK. CONTA
(CYLINDER HEAD GASKET)



Be240

ÜST TAKIM
(TOP TEAM)



De240

