



VOLVO - Ø 130,18

87-72239-STD



Motor Özellikleri
(Engine Specifications)

İmalatçı (Manufacturer):
VOLVO
Çap (Diameter): Ø 130,18
FM Grup No: 880113

TAD 1230 G

6 Sil. Dizel 11980cc
294 Kw (400 Ps)
Sabit Motor (Fixed Engine)
1993....

TAD 1230 GE

6 Sil. Dizel 11980cc
294 Kw(400 Ps)
Sabit Motor (Fixed Engine)
1993....

TAD 1230 P

6 Sil. Dizel 11980cc
294 Kw(400 Ps)
Sabit Motor (Fixed Engine)
1993....

TAD 1231 GE

6 Sil. Dizel 11980cc
Sabit Motor (Fixed Engine)
1993....

TAD 1232 GE

6 Sil. Dizel 11980cc
353 KW(480 Ps)
Sabit Motor (Fixed Engine)
1993....

TD 1210 G

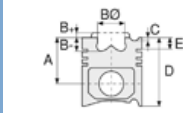
6 Sil. Dizel 11980cc
Sabit Motor (Fixed Engine)
1993....

TD 121 GP

6 Sil. Dizel 12000cc
243-283 Kw (330-385 Ps)
Sabit Motor (Fixed Engine)
1993....

TWD 1210 P

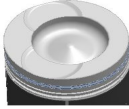
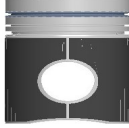
6 Sil. Dizel 11980cc
Sabit Motor (Fixed Engine)
1993....



Piston Ölçüleri
(Piston Dimensions)

A : 114.200
B- : 26.000
BØ : 80.000
BX : 4.000
C1 : 2.600
D : 172.200
E : 20.200

Pim: 55 x 114



Piston Özellikleri
(Piston Features)

Segman Taşıyıcı
(Ring Carrier)
Gözarası Düz
(Flat Eye Gap)



Piston Parça No
(Piston Part No)

87-501300-62
87-72239-STD



Segman Seti
(Ring Set)

06-501300-80-STD

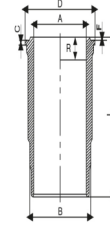
3.500 CK KV1
3.160 CR GOE
4.747 CR GOE



Silindir Gömleği
(Liner)

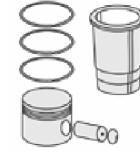
14-451050-00-WH

B : 143.900
L : 313.250
D : 157.600
C : 10.520
F : 3.230
R : 20.000



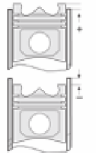
O-Ring Bilgi
(O Ring Information)
24-24468-02/O
1x 142,8*5,8 FPM
2x 142,8*5,8 EPDM
1x 141*2,4 FPM

14-451050-00-WH
O-Ring Bilgi
(O Ring Information)
24-24468-02/O
1x 142,8*5,8 FPM
2x 142,8*5,8 EPDM
1x 141*2,4 FPM



Silindir Kit
(Assembly Set)

89-501300-62-STD
89-72239-STD



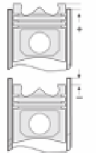
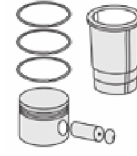
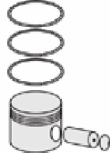
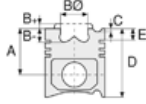
Piston - Blok Montaj
Yüksekliği
(Piston - Block
Assembly Height)

+0,05/+0,45



VOLVO - Ø 130,18

87-72239-STD



Motor Özellikleri
(Engine Specifications)

Piston Ölçüleri
(Piston Dimensions)

Piston Parça No
(Piston Part No)

Segman Seti
(Ring Set)

Silindir Gömleği
(Liner)

Silindir Kit
(Assembly Set)

Piston - Blok Montaj
Yüksekliği
(Piston - Block
Assembly Height)

TWD 1210 V

6 Sil. Dizel 11980cc
Sabit Motor (Fixed Engine)
1993....

TWD 1211 G

6 Sil. Dizel 11980cc
Sabit Motor (Fixed Engine)
1993....

TWD 1211 P

6 Sil. Dizel 11980cc
Sabit Motor (Fixed Engine)
1993....

TWD 1211 V

6 Sil. Dizel 11980cc
Sabit Motor (Fixed Engine)
1993....

TWD 1230 V

6 Sil. Dizel 11980cc
Sabit Motor (Fixed Engine)
1993....

TWD 1230 VE

6 Sil. Dizel 11980cc
Sabit Motor (Fixed Engine)
1993....

TWD 1231 VE

6 Sil. Dizel 11980cc
Sabit Motor (Fixed Engine)
1993....

