



BUKH - Ø105

87-70309-STD



**Motor Özellikleri**  
(Engine Specifications)

İmalatçı (Manufacturer):  
BUKH  
Çap (Diameter): Ø105  
FM Grup No: 1501

1 Sil. Dizel 16PS  
G 105

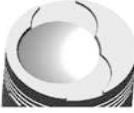
2 Sil. Dizel 32PS  
2G 105

3 Sil. Dizel 48PS  
3G 105, 403, D302, D452

**Piston Ölçüleri**  
(Piston Dimensions)

A : 71.600  
B- : 5.730  
BØ : 65.000  
Bx : 10.000  
C1 : 2.600  
D : 134.500  
E : 19.000

Pim: 38 x 90



**Piston Özellikleri**  
(Piston Features)

Gözarası düz  
(Flat Eye Gap)

**Piston Parça No**  
(Piston Part No)

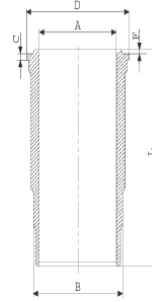
87-703600-02  
87-70309-STD

**Segman Seti**  
(Ring Set)

06-703600-10-STD  
2.500 P STD  
3.000 P STD  
3.000 P STD  
6.000 P STD  
6.000 P STD

**Silindir Gömleği**  
(Liner)

14-351150-00-WH  
B : 120.000  
L : 238.500  
D : 129.000  
C : 8.000  
F : 0.500



**Silindir Kit**  
(Assembly Set)

88-703600-02-STD  
88-70309-STD

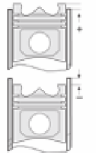
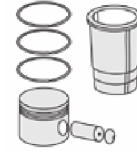
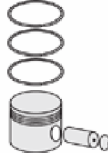
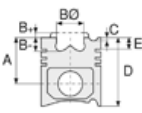
**Piston - Blok Montaj**  
Yüksekliği  
(Piston - Block  
Assembly Height)





BUKH - Ø 105

87-70310-STD



**Motor Özellikleri**  
(Engine Specifications)

İmalatçı (Manufacturer):  
BUKH  
Çap (Diameter): Ø 105  
FM Grup No: 1502

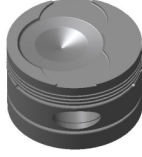
**4K 105**  
4 Sil. Dizel 51Kw (68PS)  
TRAKTOR 4x105

**6K 105**  
6 Sil. Dizel 75Kw (101PS)  
TRAKTOR 4x105  
1961....

**Piston Ölçüleri**  
(Piston Dimensions)

A : 71.600  
B- : 12.400  
BØ : 65.000  
BX : 10.000  
C1 : 2.600  
D : 134.600  
E : 18.900

Pim: 38 x 90



**Piston Özellikleri**  
(Piston Features)






Gözarası düz  
(Flat Eye Gap)

**Piston Parça No**  
(Piston Part No)

87-703600-12  
87-70310-STD

**Segman Seti**  
(Ring Set)

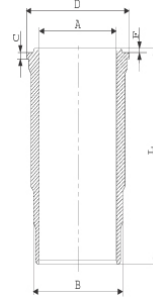
06-703600-10-STD

2.500  P STD  
3.000  P STD  
3.000  P STD  
6.000  P STD  
6.000  P STD

**Silindir Gömleği**  
(Liner)

14-351150-00-WH

B : 120.000  
L : 238.500  
D : 129.000  
C : 8.000  
F : 0.500



**Silindir Kit**  
(Assembly Set)

88-703600-22-STD  
88-70310-STD

**Piston - Blok Montaj**  
Yüksekliği  
(Piston - Block  
Assembly Height)

