



Motor Özellikleri
(Engine Specifications)

İmalatçı (Manufacturer):
SAAB-SCANIA-DOOSAN
Çap (Diameter): Ø 127
FM Grup No: 7574

DC 11.03 Euro3

6 Sil. Dizel 10640cc
250 Kw(340 Ps) 18:1
Turbo, Intercooler 24 v
k114, P114, R114, T114
1996...

DC 11.04 Euro3 / DC

11.09 Euro3
6 Sil. Dizel 10640cc
280 Kw(381 PS) 18:1
Turbo, Intercooler 24 v
Century 12.35, k114,
P114, R114, T114
1996...

DC 9.19 / DC 9.20

5 Sil. Dizel 169 kw /
230 PS
DOOSAN İLE ORTAK
MOTOR
(With DOOSAN
Common Engine)
P 230-P 270

Piston Ölçüleri
(Piston Dimensions)

A : 92.040
B - : 21.150
BØ : 75.100
D : 136.040
E : 14.200

Pim : 54 x 106

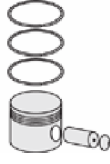


Piston Özellikleri
(Piston Features)

Segman Taşıyıcı
(Ring Carrier)
Yağ Püskürtme Oyuğu
(Oil Jet Cut-Out)
Burçlu Piston
(Bushing Piston)
Göz Arası Konik
(Conical Eye Gap)

Piston Parça No
(Piston Part No)

87-892350-42
87-73737-STD



Segman Seti
(Ring Set)

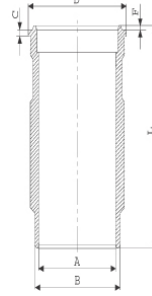
06-892350-20-STD
3.500 CK KV1
2.385 GOE
3.500 CR STD

Yağ Segmanı Matkap
Delikli /
(Oil Ring Drill Hole)
Goetze® LKZ-Ring®



Silindir Gömleği
(Liner)

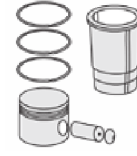
14-579940-00-WH
B : 138.500
L : 271.120
D : 150.000
C : 194.270
F : 0.850
R : 8.250



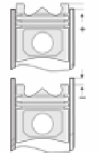
O-RİNG BİLGİ
(O-Ring Information)
24-35045-60/O
1x 138*144.75 *4.6 FPM
1x 148*4 FPM

Silindir Kit
(Assembly Set)

89-892350-42-STD
89-73737-STD



Piston - Blok Montaj
Yüksekliği
(Piston - Block
Assembly Height)



87-892300-42
87-73737-STD A

06-892300-20-STD
3.500 CK KV1
2.385 P F14
3.500 CR STD
Goetze® LKZ-Ring®
Yağ Segmanı Matkap Delik
(Oil Ring Drill Hole)

14-579940-00-WH
O-RİNG BİLGİ
(O-Ring Information)
24-35045-60/O
1x 138*144.75 *4.6 FPM
1x 148*4 FPM

89-892300-42-STD
89-73737-STD A





DOOSAN - Ø 128

87-74781-STD



Motor Özellikleri
(Engine Specifications)

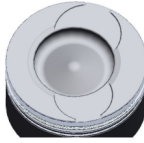
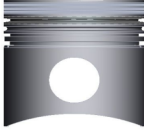
İmalatçı (Manufacturer):
DOOSAN
Çap (Diameter): Ø 128
FM Grup No: 9501

V-222 T1
12 Sil. Dizel 21927cc 736
Kw(1000 PS)
MARIN MOTOR

Piston Ölçüleri
(Piston Dimensions)

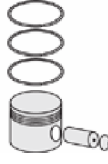
A : 81.300
B- : 26.200
BØ : 72.500
BX : 2.000
C1 : 1.200
D : 128.300
E : 19.300

Pim : 46 x 105



Piston Özellikleri
(Piston Features)

Segman Taşıyıcı
(Ring Carrier)
Soğutma Kanallı
(Coolin Gallery)
Yağ Püskürtme Oyuğu
(Oil Jet Cut-Out)
Göz Arası Konik
(Conical Eye Gap)



Piston Parça No
(Piston Part No)

87-845600-02
87-74781-STD



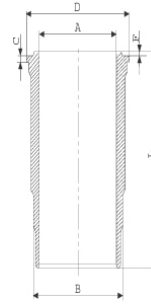
Segman Seti
(Ring Set)

06-845600-00-STD
3.500 CK KV4
3.000 CR GOE
4.000 CR GOE



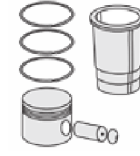
Silindir Gömleği
(Liner)

14-457080-00-WH
B : 144.500
L : 253.000
D : 153.800
C : 10.070
F : 1.000

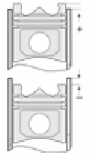


Dış Yüzeyi Krom Kaplı
(Exterior Surface
Chromium Covered)

O-RING BİLGİ
(O-Ring Information)
24-35005-00/O
2x 140*1,9 FPM
2x 144*3,8 FPM



Silindir Kit
(Assembly Set)



Piston - Blok Montaj
Yüksekliği
(Piston - Block
Assembly Height)

