



FAP-FAMOS - Ø 112

06-781600-00-STD



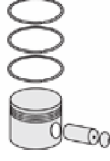
Motor Özellikleri
(Engine Specifications)

İmalatçı (Manufacturer):
FAP-FAMOS
Çap (Diameter): Ø 112
FM Grup No: 2601

FF-1
6 Sil. Dizel 18300cc
FAP13FF, VKF
1962...



Piston Ölçüleri
(Piston Dimensions)



Piston Parça No
(Piston Part No)



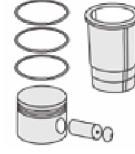
Segman Seti
(Ring Set)

06-781600-00-STD

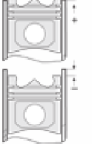
3.500  CR IKA
3.000  STD
3.500  STD
6.000  STD



Silindir Gömleği
(Liner)



Silindir Kit
(Assembly Set)



Piston - Blok Montaj
Yüksekliği
(Piston - Block
Assembly Height)





FAP-FAMOS - Ø 123

06-781500-00-STD



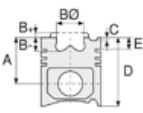
Motor Özellikleri
(Engine Specifications)

İmalatçı (Manufacturer):
FAP-FAMOS
Çap (Diameter): Ø 123
FM Grup No: 2602

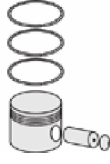
4F
6 Sil. Dizel
9GF 4F3206
1962...

4FU
6 Sil. Dizel

ENDÜSTRİYEL
(INDUSTRIAL)
1962...



Piston Ölçüleri
(Piston Dimensions)



Piston Parça No
(Piston Part No)



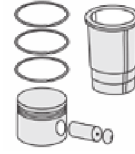
Segman Seti
(Ring Set)

06-781500-00-STD

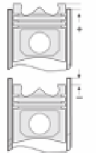
3.000  CRP IKA
3.000  P STD
3.000  P STD
6.000  P STD



Silindir Gömleği
(Liner)



Silindir Kit
(Assembly Set)



Piston - Blok Montaj
Yüksekliği
(Piston - Block
Assembly Height)





Motor Özellikleri
(Engine Specifications)

İmalatçı (Manufacturer):
FAP - FAMOS
Çap (Diameter): Ø 125
FM Grup No: 2603

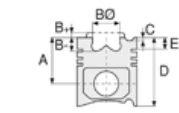
2F-B
6 Sil. Dizel
ENDÜSTRİYEL (INDUSTRIAL)
1980...

2FU-B
6 Sil. Dizel
ENDÜSTRİYEL (INDUSTRIAL)
1980...

2FP-B
6 Sil. Dizel
ENDÜSTRİYEL (INDUSTRIAL)
1980...

2FUP-B
6 Sil. Dizel
ENDÜSTRİYEL (INDUSTRIAL)
1980...

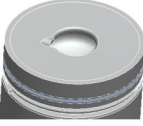
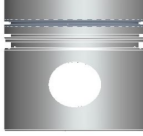
2EP-B, 2FUB-B
6 Sil. Dizel 11640cc
170 Kw (231 PS) 17, 5:1 Turbo
KAMYON, OTOBÜS
(TRUCK, BUS)
1980...



Piston Ölçüleri
(Piston Dimensions)

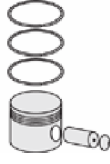
A : 89.300
B- : 38.500
BØ : 38.000
D : 137.800
E : 23.700

Pim : 46 x 108



Piston Özellikleri
(Piston Features)

Segman Taşıyıcı
(Ring Carrier)
Sert Anotlama
(Hard Anodizing)
Yağ Püskürtme Oyuğu
(Oil Jet Cut-Out)
Göz Arası Düz
(Flat Eye Gap)



Piston Parça No
(Piston Part No)

87-781800-02
87-70588-STD



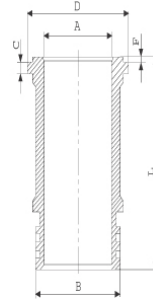
Segman Seti
(Ring Set)

06-781800-00-STD
3.500 CRP IKA
3.000 P STD
6.000 CRP STD

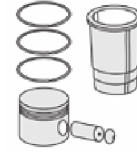


Silindir Gömleği
(Liner)

14-688690-00-WH
B : 139.000
L : 271.000
D : 149.000
C : 15.270
F : 0.500

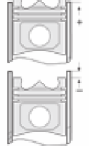


Dış Yüzeyi Fosfat Kaplı
(Outer Surface
Phosphate Coated)



Silindir Kit
(Assembly Set)

88-781800-02-STD
88-70588-STD



Piston - Blok Montaj
Yüksekliği
(Piston - Block
Assembly Height)

